

Proposed Ballynagare Wind Farm Public Consultation Webinar



Ballynagare Wind Farm Proposal

- Company Introduction
- Wind Farm Design
- Community Fund
- Q&A
- EIA Activities
- Q&A
- Conclusion



Company Introduction



95 Years

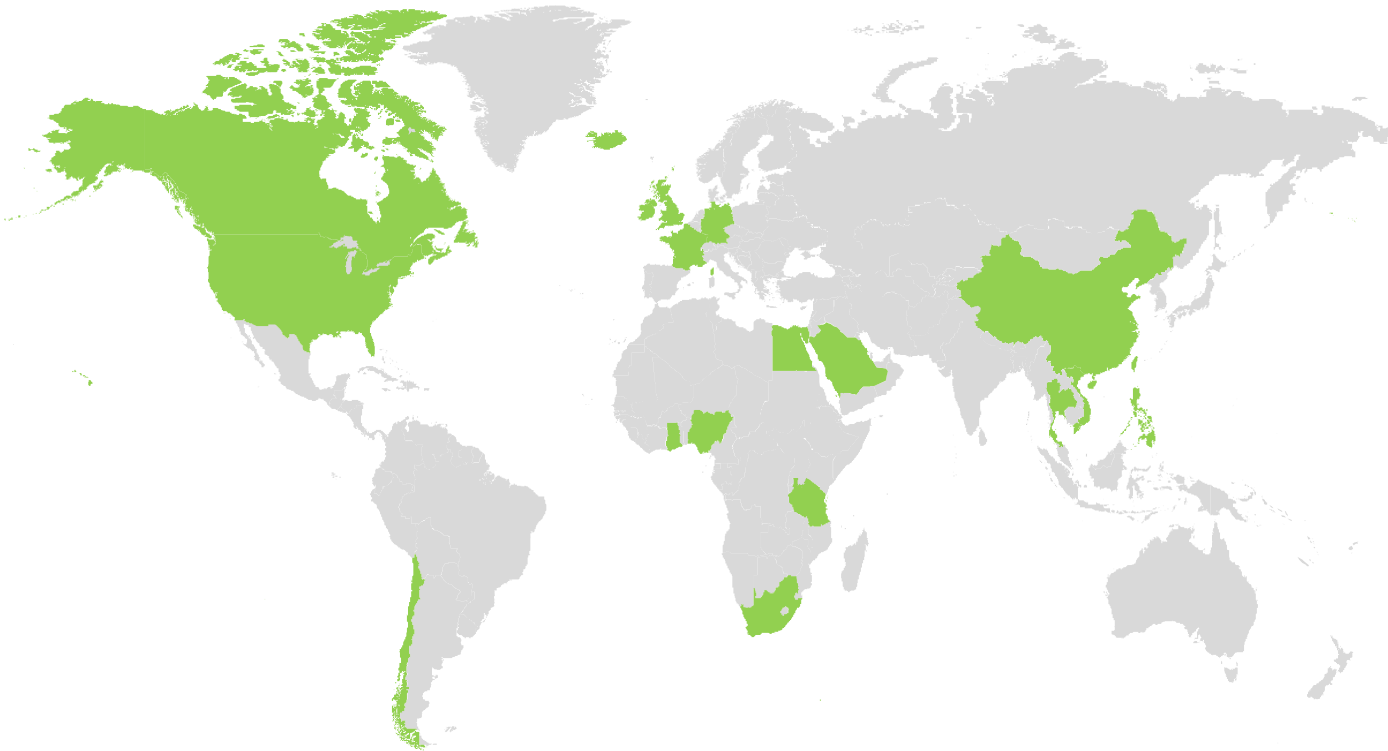
Combined Experience of
EMPower Management
Team in Renewable Energy

+700 MW

Wind Energy Capacity
Currently Under
Development By EMPower

5 Continents

Combined Geographical
Experience of EMPower
Team in Renewable Energy



Project Introduction



Proposed Ballynagare Wind Farm

-
Ballynagare, Dysert, Dysert Marshes and
Curraghcroneen in Co. Kerry

-
Up to 10 Turbines

-
Estimated 60 MW

-
Tip height of up to 170m

-
Enough clean electricity to power over
35,000 Irish homes

-
Estimated community benefit fund of
€297,490 per annum

Ballynagare Wind Farm



Legend

Ballynagare Buildable Area

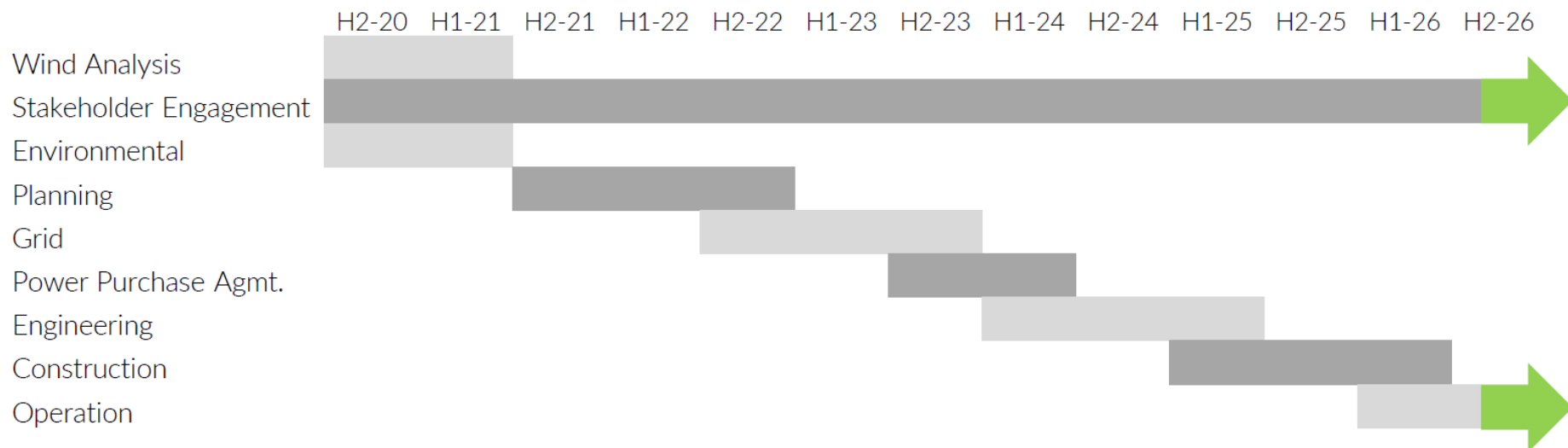
Proposed Project Schedule

Planning Submission to An Bord Pleanala (Strategic Infrastructure Development) Summer 2021

Grid Connection Submission Summer 2022

Renewable Electricity Support Scheme Submission Summer 2023

Construction Commences Spring 2025



Energy Targets in Ireland

Table 7.5 Potential Metrics to Deliver Abatement in Electricity

Key Metrics	2017	2025 Based on MACC	2030 Based on MACC
Share of Renewable Electricity, %	~30% ²⁰	52%	70%
Onshore Wind Capacity, GW	~3.3	6.5	8.2
Offshore Wind Capacity, GW	NA	1.0	3.5
Solar PV Capacity, GW	NA	0.2	0.4
CCGT Capacity, GW	~3.6	5.1	4.7

70%
Renewables by
2030

8.2 GW
Onshore wind
by 2030

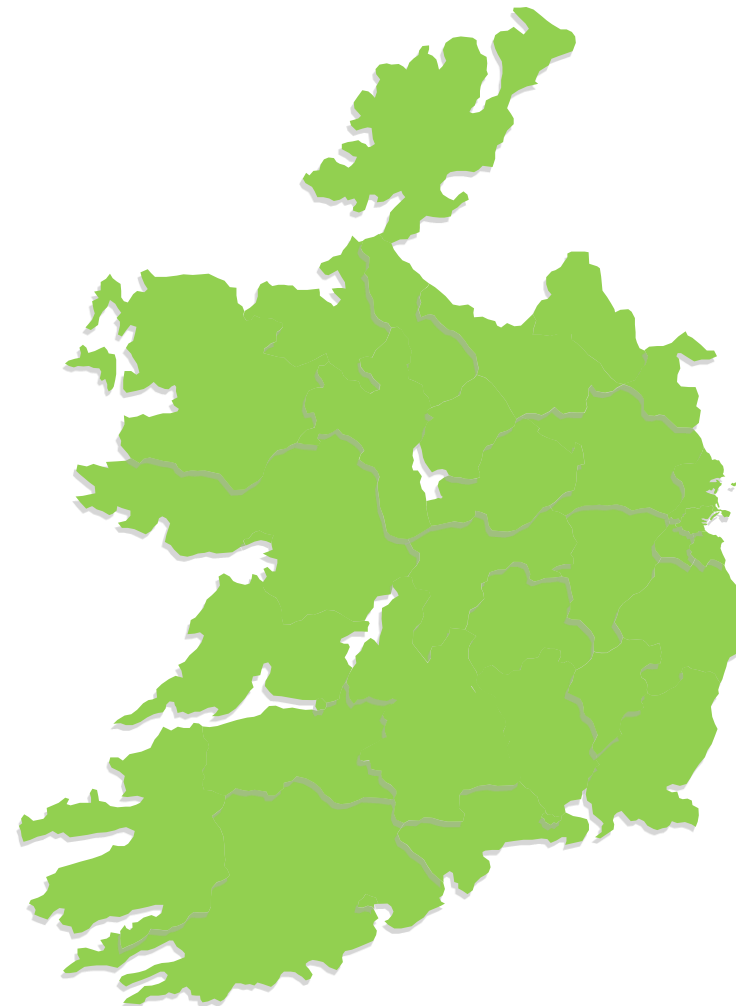
Source – Department of Communications, Climate Action and Environment
Climate Action Plan 2019
Marginal Abatement Cost Curve (MACC) Analysis

Site Screening



Screening analysis performed on the entire Republic of Ireland incorporating constraints such as:

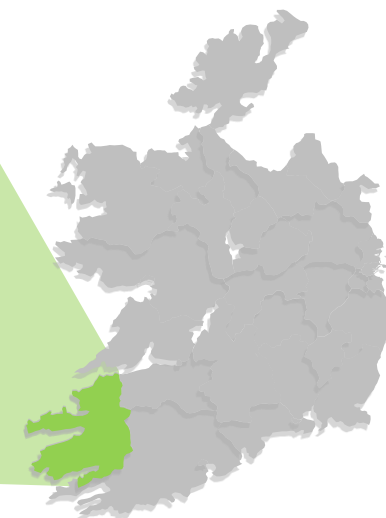
- Wind speed
- Grid connection
- Environmental Designations
- Culture and heritage
- Tourism
- County Development Plans
- Existing, planned and permitted projects
- Housing



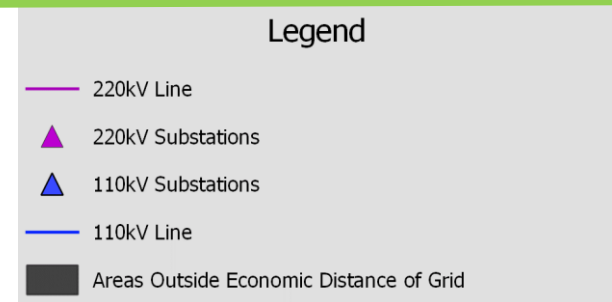
Site Screening



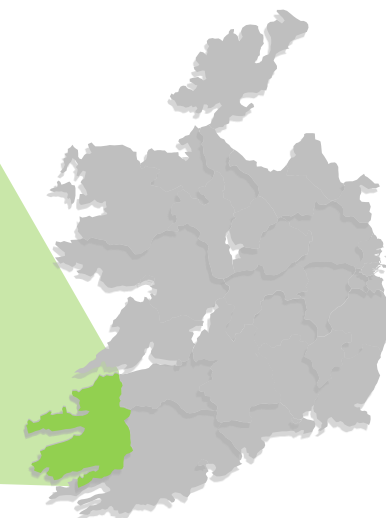
Screening analysis performed on the entire Republic of Ireland. Example of County Kerry shown.



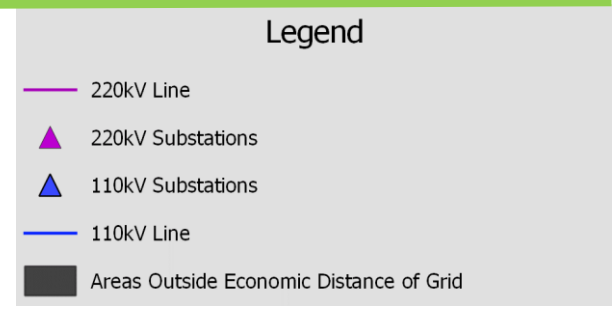
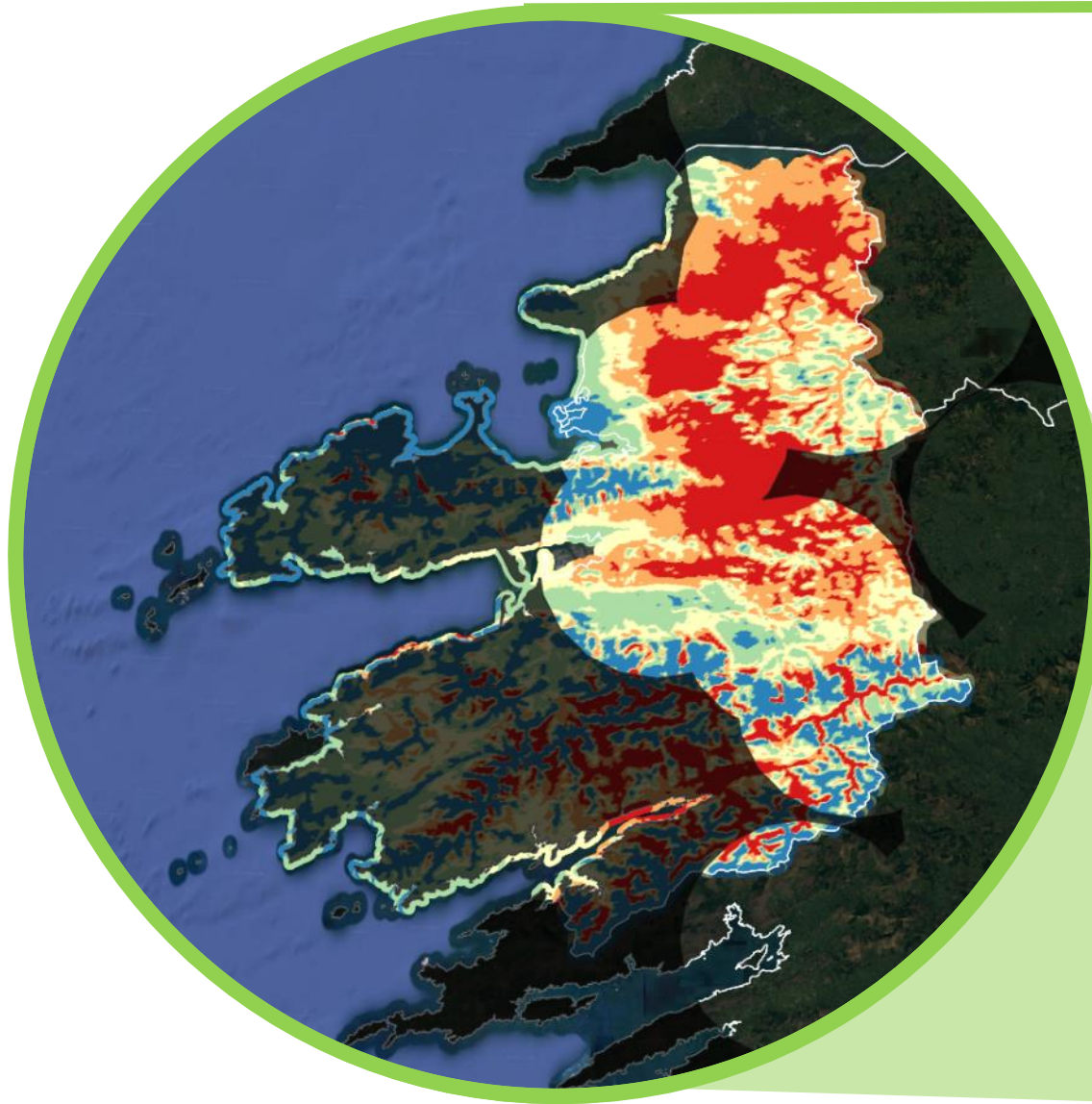
Site Screening



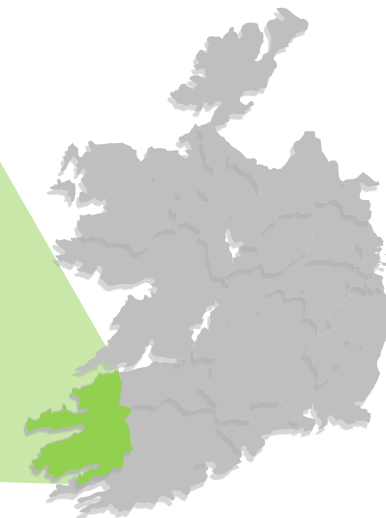
Screening analysis performed on the entire Republic of Ireland. Example of County Kerry shown.



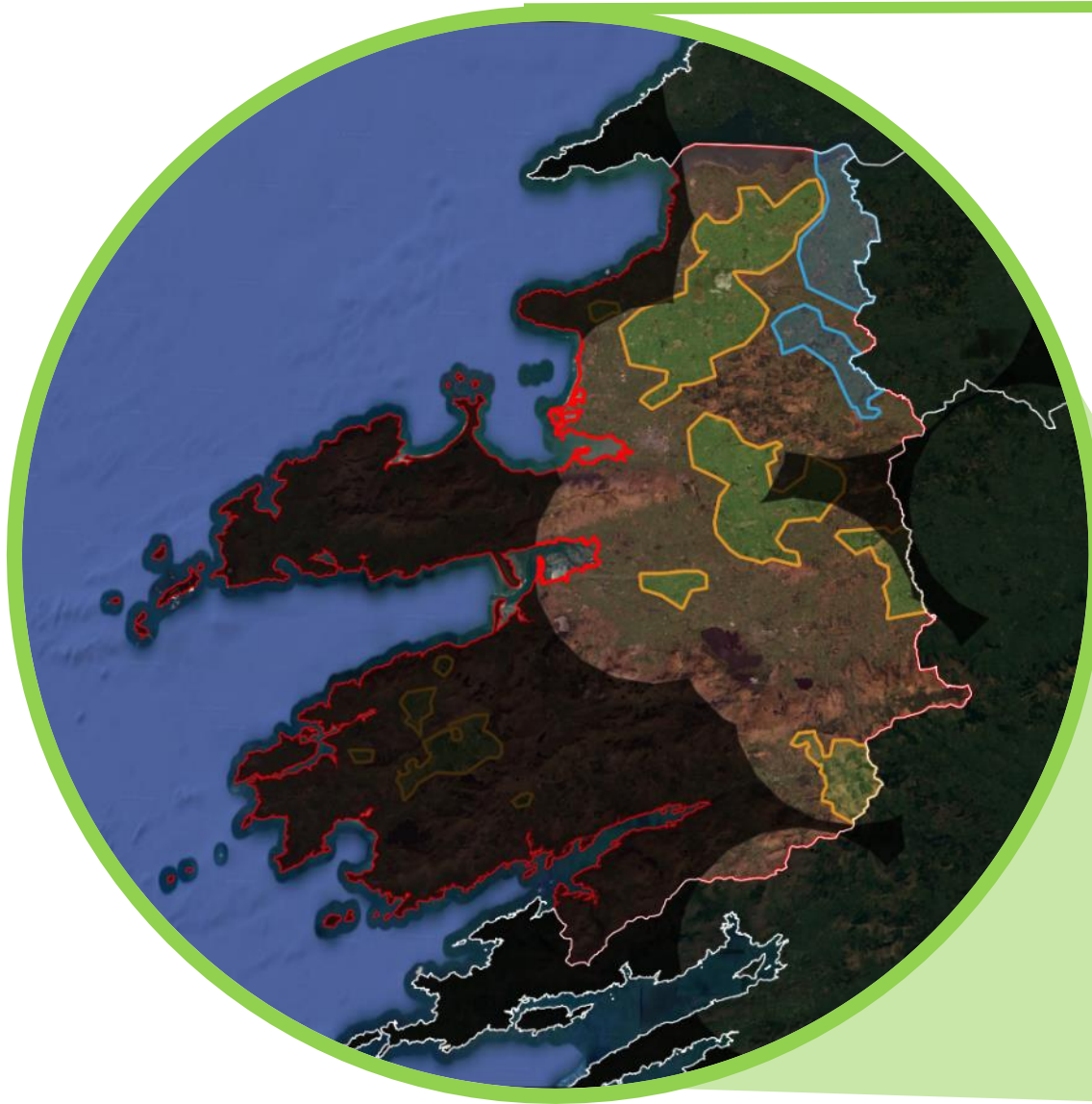
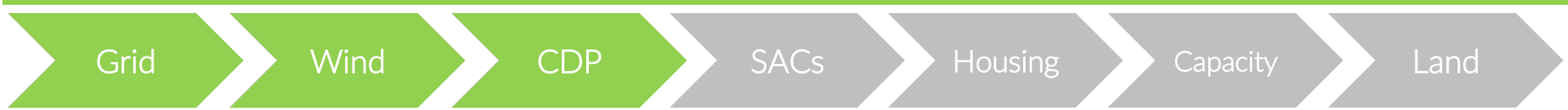
Site Screening



Screening analysis performed on the entire Republic of Ireland. Example of County Kerry shown.



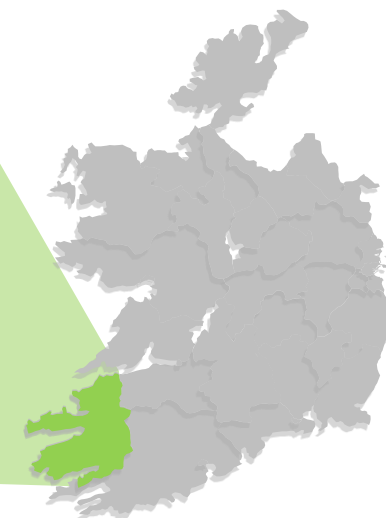
Site Screening



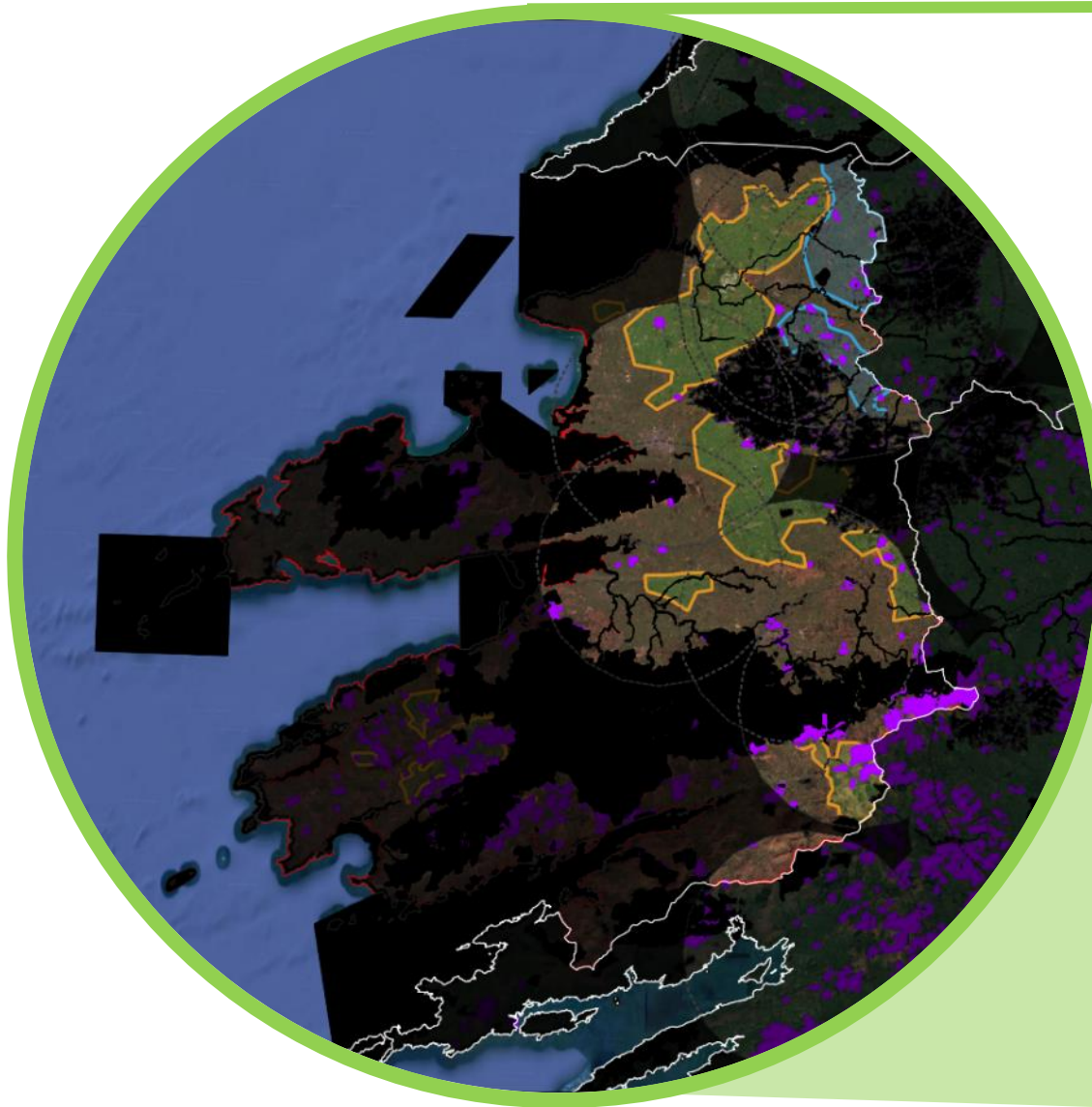
Legend

- 220kV Line
- ▲ 220kV Substations
- ▲ 110kV Substations
- 110kV Line
- Areas Outside Economic Distance of Grid
- Kerry Strategic
- Kerry OTC
- Kerry Unsuitable

Screening analysis performed on the entire Republic of Ireland. Example of County Kerry shown.



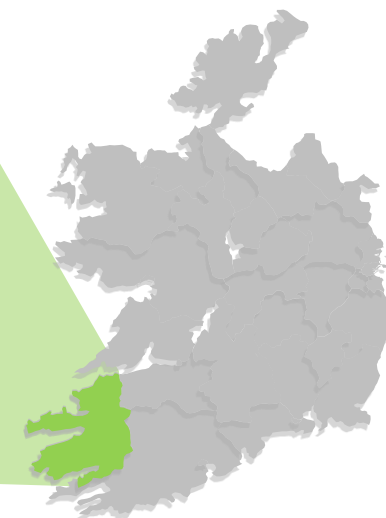
Site Screening



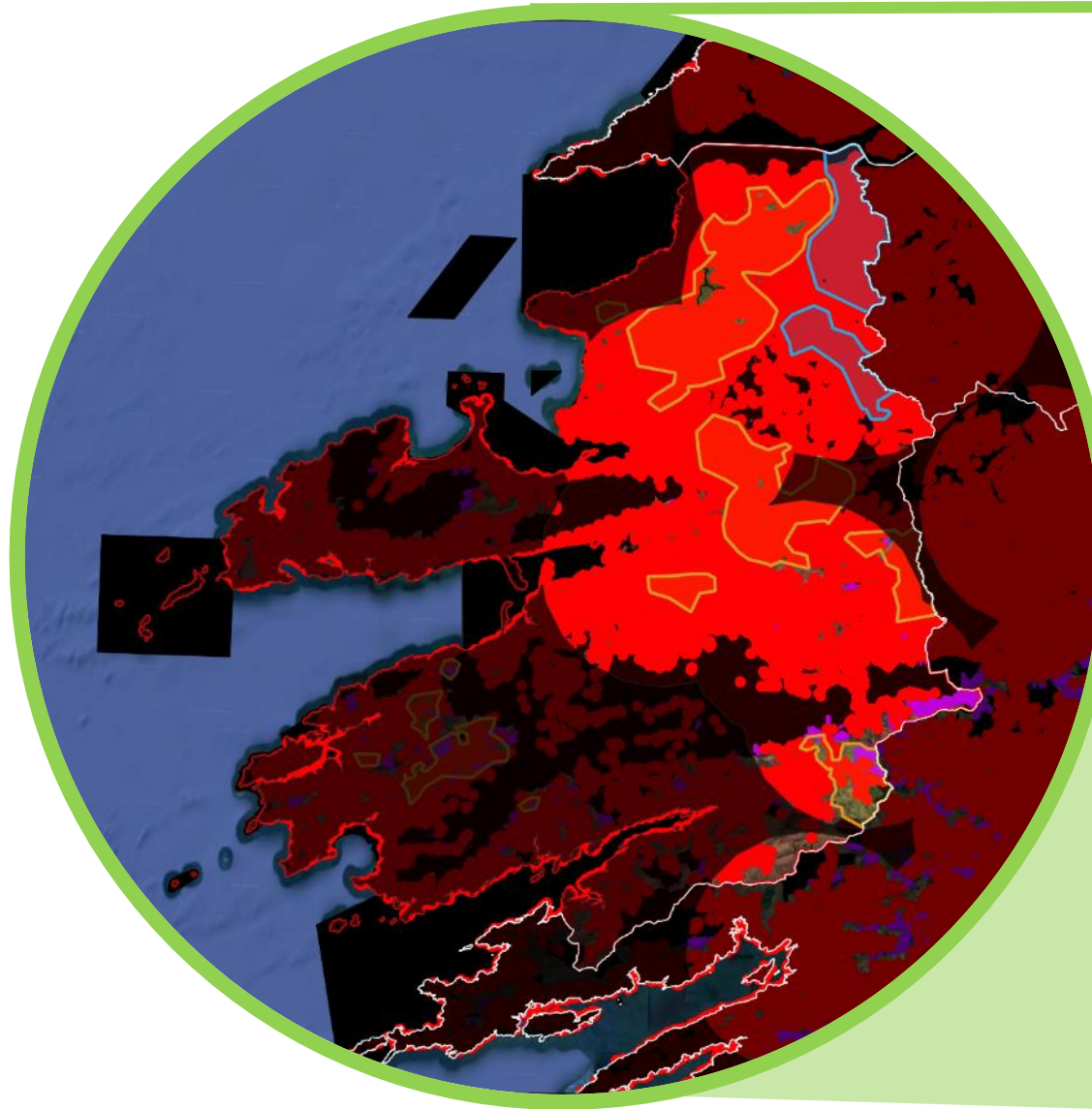
Legend

- Kerry Strategic
- Kerry OTC
- Kerry Unsuitable
- Environmental Designations
- Coillte Land

Screening analysis performed on the entire Republic of Ireland. Example of County Kerry shown.



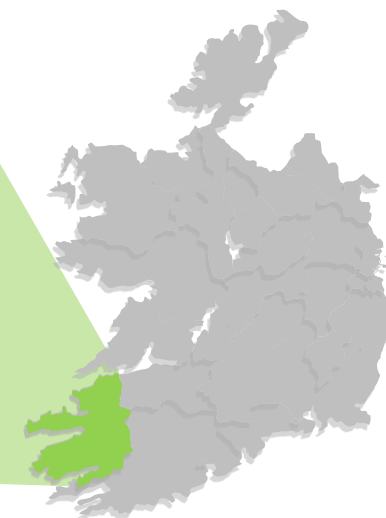
Site Screening



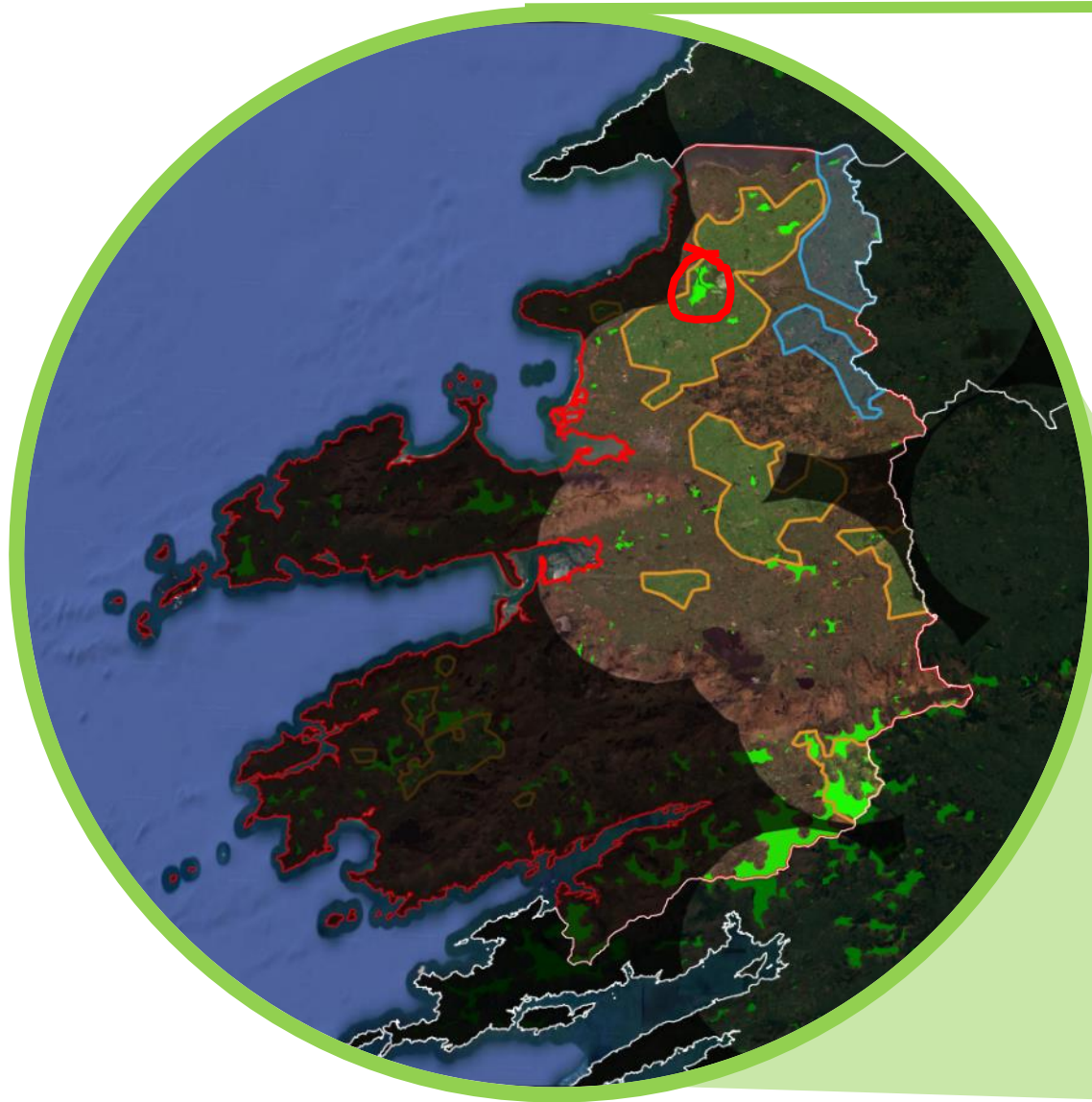
Legend

- Kerry Strategic
- Kerry OTC
- Kerry Unsuitable
- Environmental Designations
- Coillte Land
- 700m Buffers on Residential and Commercial Buildings

Screening analysis performed on the entire Republic of Ireland. Example of County Kerry shown.

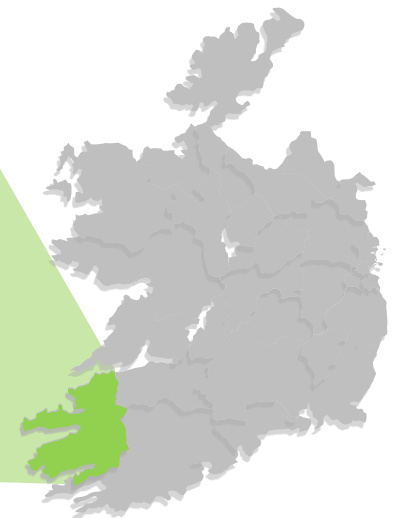


Site Screening



Legend


- Buildable Area

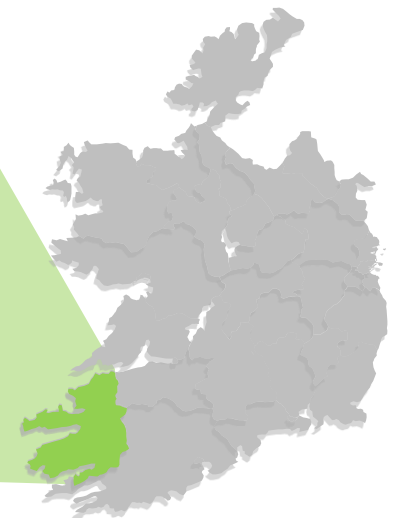


Site Screening



Legend

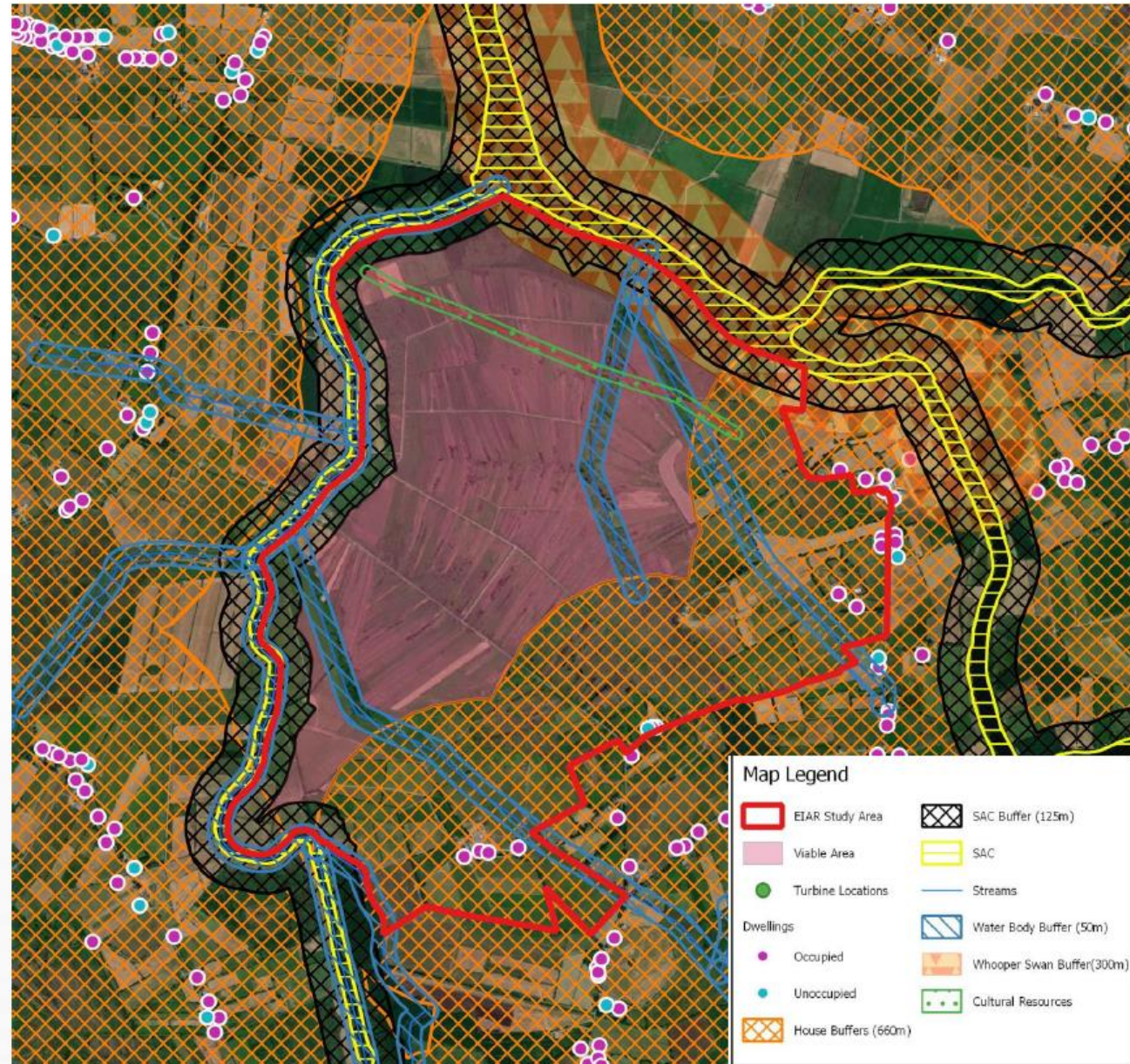
 Buildable Area

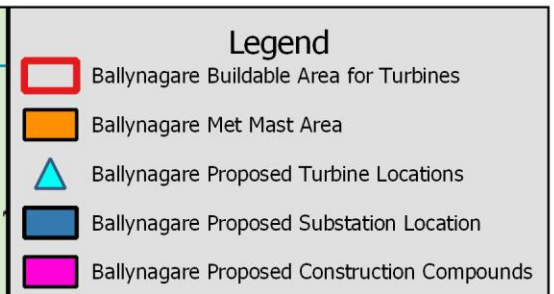




Project Design/Constraints

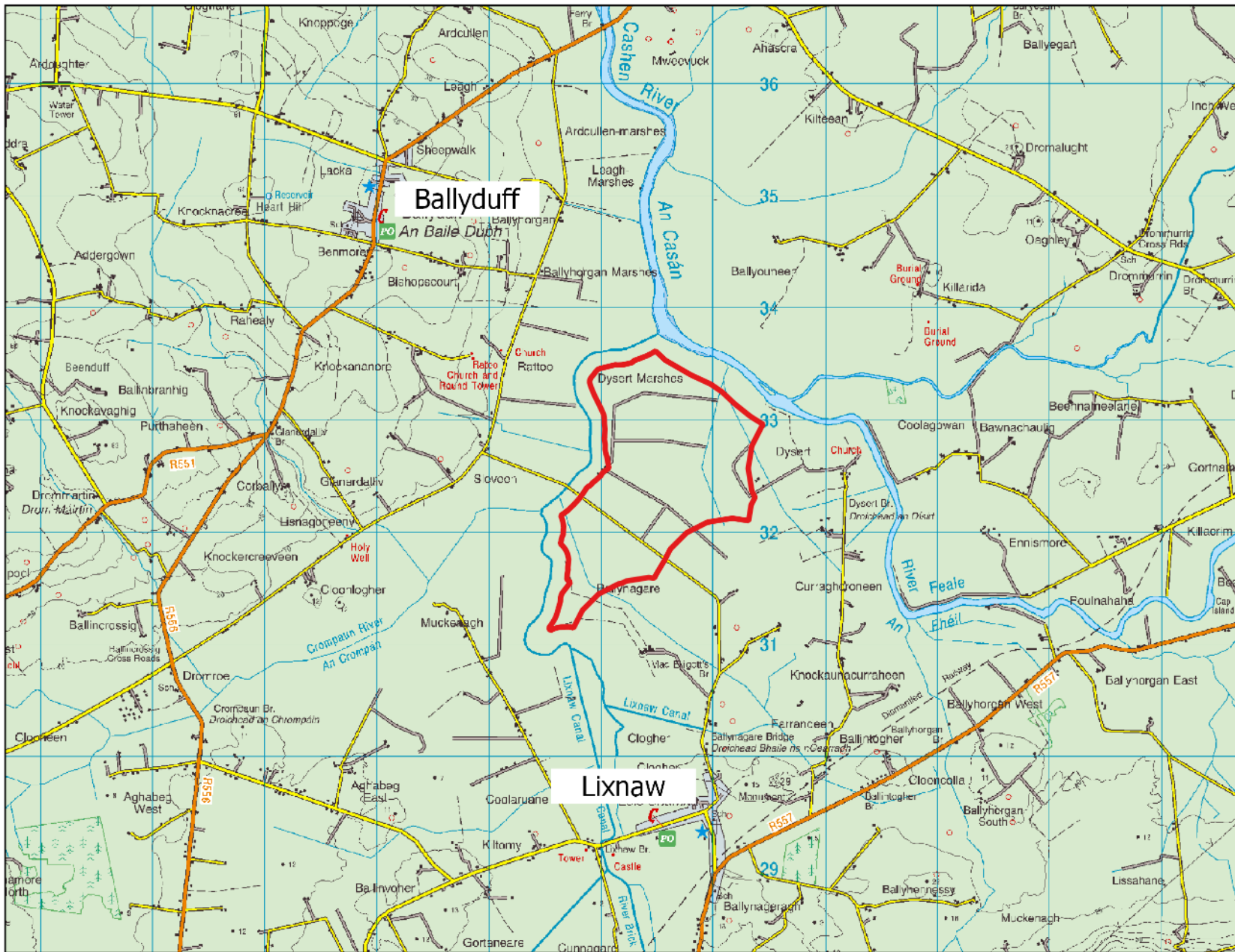
- Development site is located in an area deemed 'Open to Consideration' in the extant Development Plan.
- Constraints include:
 - SAC and buffer
 - Water body
 - Dwellings
 - Landownership
 - Cultural Heritage






Proposed Ballynagare Wind Farm





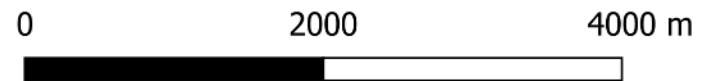
Legend

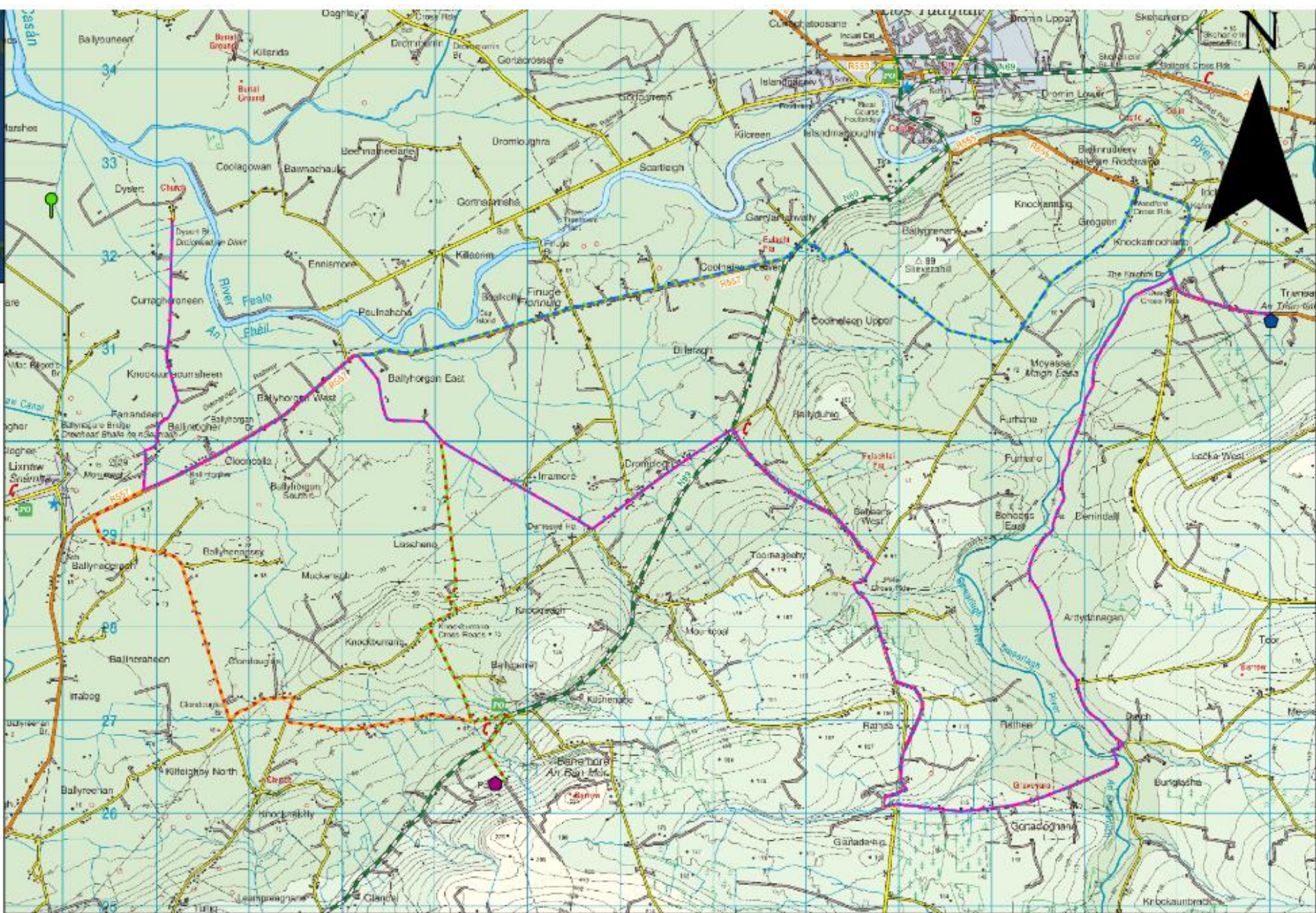
 Ballynagare Buildable Area

Proposed Ballynagare Wind Farm

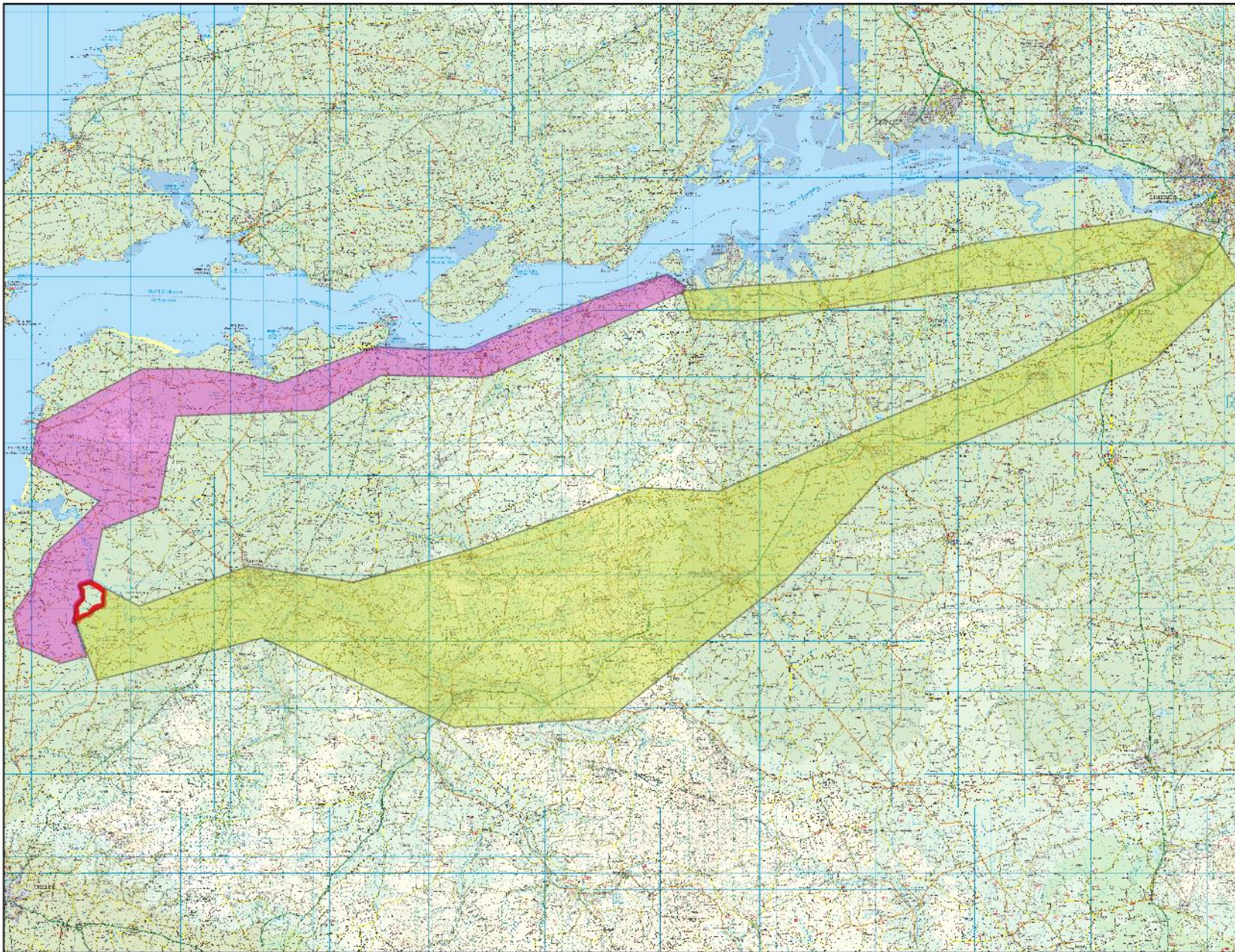
-
- MKO Environmental Consultants
-
- Up to 10 Turbines
-
- Estimated 60 MW
-
- Tip height of up to 170m
-
- Supporting infrastructure, substation, met mast, site compound, roads
-

Proposed Ballynagare Wind Farm



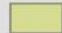




Ballynagare Wind Farm - Grid Route Options



Legend

-  Ballynagare Buildable Area
- Ballynagare Haulage Route Option Corridors**
 -  Corridor Option A
 -  Corridor Option B

Proposed Ballynagare Wind Farm



Community Benefits

Renewable Electricity Support Scheme (RESS)
High Level Design

95

Direct jobs in construction phase

22

Highly skilled jobs over project lifetime

€61.8 million

Investment in Irish infrastructure

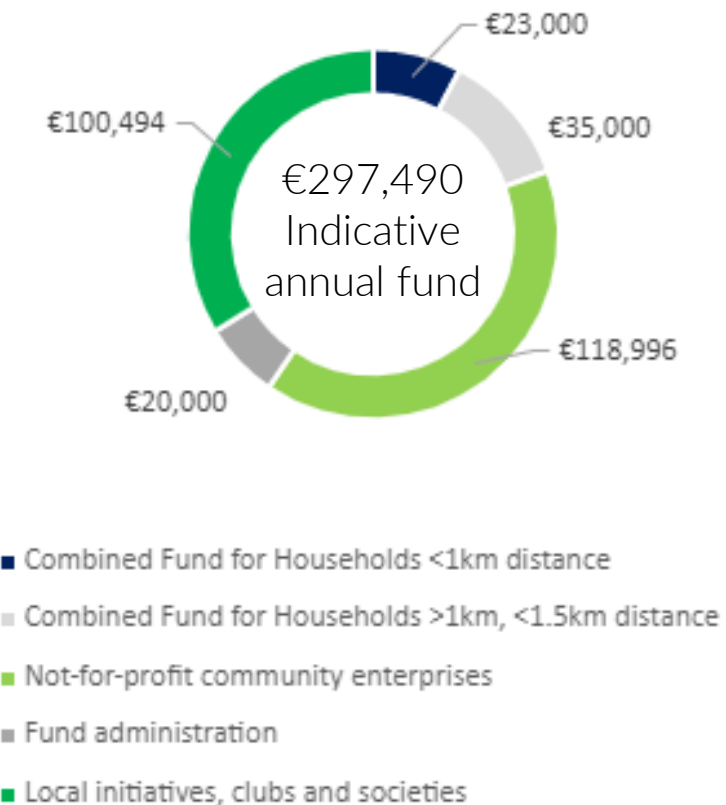
€4.46 million

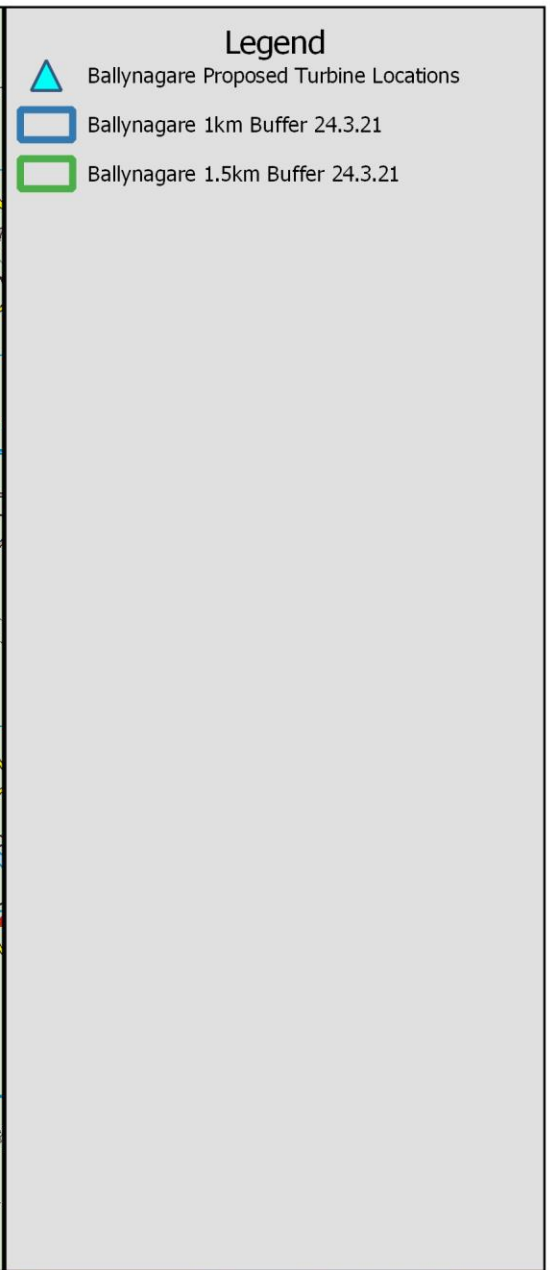
Total indicative Community Fund Contribution

€10.1 million

County Council Rates Contribution

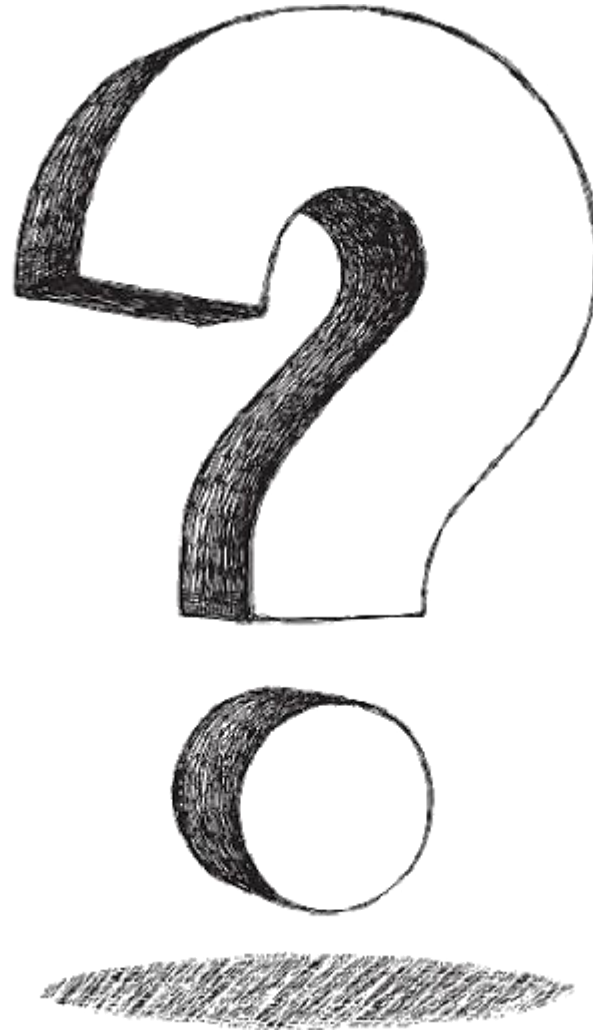
Ballynagare Indicative Community Fund Allocation





Proposed Ballynagare Wind Farm





Hydrology



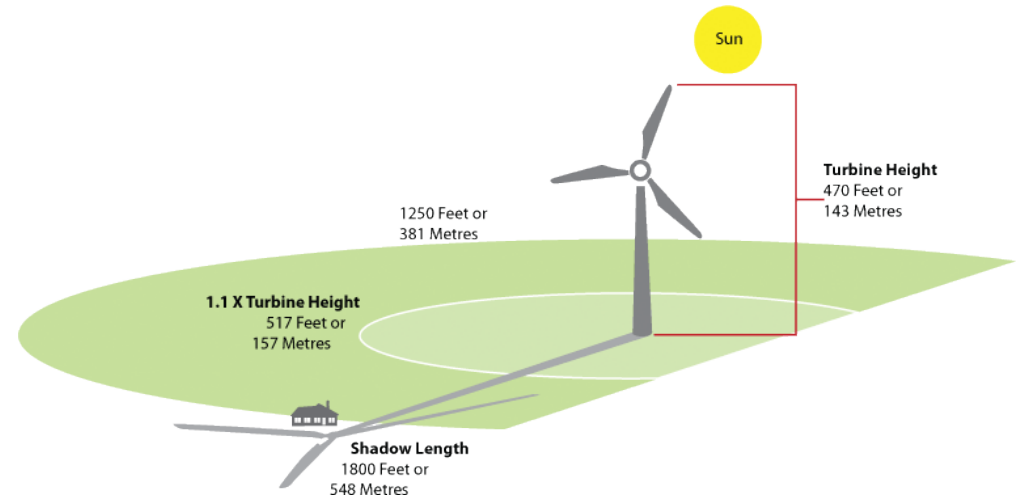
Ornithology

Population & Human Health



Biodiversity

Shadow Flicker



Sound

Construction and Civil Engineering

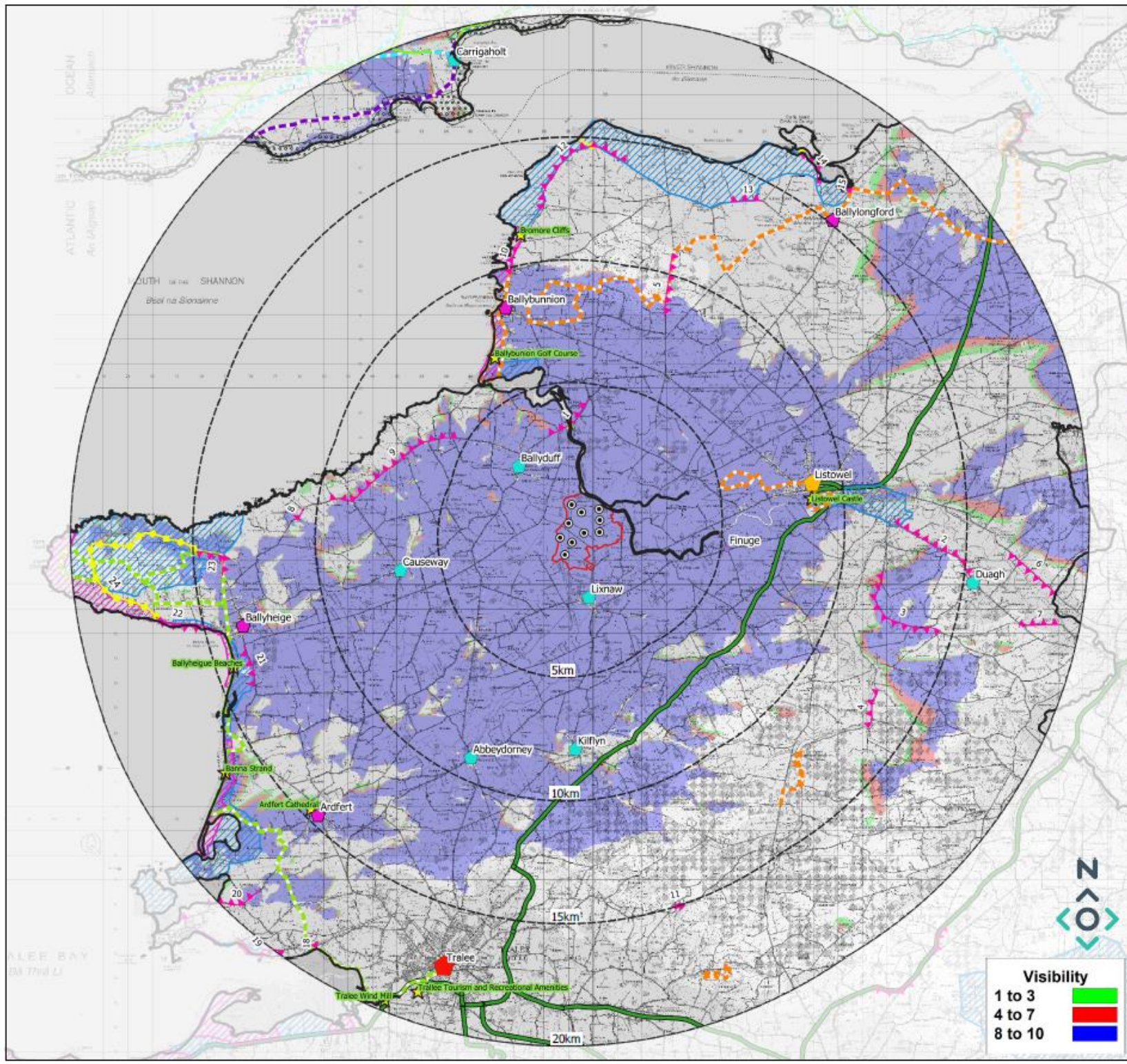


Archaeology



Landscape and Visuals





Map Legend

- Site Boundary
 - Ballynagare Turbine Locations
 - County Boundary
 - National Roads
 - ★ Tourism Designations
 - Co. Clare Heritage Landscapes
 - Co. Clare - Loop Head Heritage Trail
 - Co. Clare Scenic Routes
 - Co. Kerry Landscape Character Areas
 - Co. Kerry Scenic Routes - 1 way
 - Co. Kerry Scenic Routes - 2 way
 - Co. Kerry Primary Special Amenity Area
 - Co. Kerry Secondary Special Amenity Area
 - Co. Kerry Walking Trails
 - North Kerry Way
 - Wild Atlantic Way
- Settlement Hierarchy
- ◆ Hub Town
 - ◆ Regional Town
 - ◆ District Town
 - ◆ Village
 - ◆ Settlement
 - ◆ Small Village

Ordnance Survey Ireland Licence No. AR 0021820© Ordnance Survey Ireland/Government of Ireland

Drawing Title
ZTV and Landscape Baseline

Project Title
Ballynagare Wind Farm

Drawn By AW	Checked By TB
Project No. 200512	Drawing No. Figure 13.5
Scale 1:150000	

MKO
Planning and Environmental Consultants
Tuam Road, Galway
Ireland, H91 VW84
+353 (0) 91 735611
email: info@mkofireland.ie
Website: www.mkofireland.ie

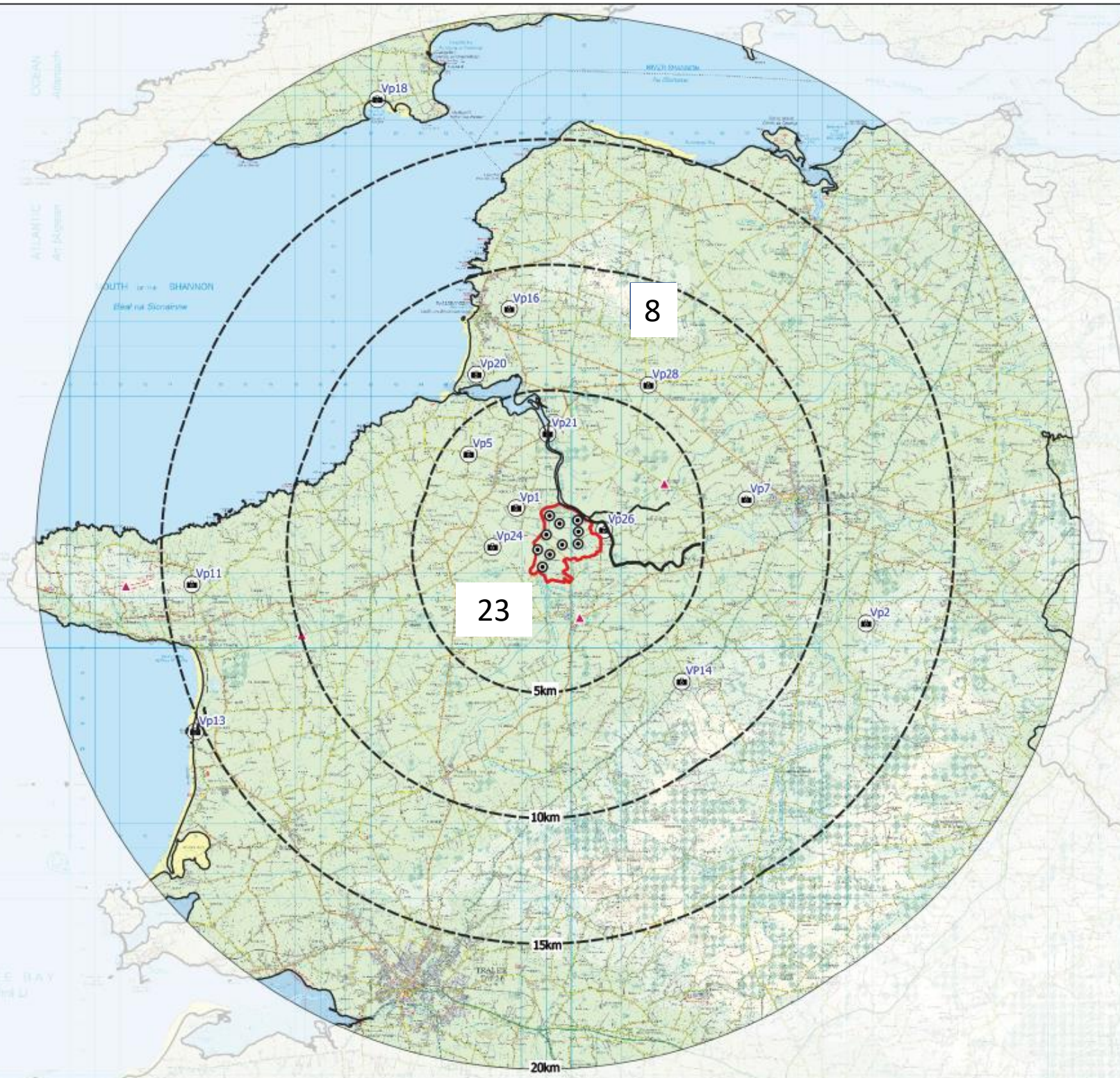
Visibility

1 to 3	
4 to 7	
8 to 10	



Map Legend

- Site Boundary
- ⊙ Ballynagare Turbine Locations
- County Boundary
- Viewpoint Locations
- ▲ No Visibility Viewpoints



Ordnance Survey Ireland Licence No. AR 0021821© Ordnance Survey Ireland/Government of Ireland

Drawing Title

Chosen Viewpoints

Project Title

Ballynagare Wind Farm

Drawn By

AW

Checked By

TB

Project No.

200512

Drawing No.

Figure 13.10

Scale

1:50000

Date



MKO
 Planning and
 Environmental
 Consultants
 Tuam Road, Galway
 Ireland, H91 VW84
 +353 (0) 91 735611
 email: info@mkofireland.ie
 Website: www.mkofireland.ie

Environmental Impact Assessment

View Point 08
Farranastack

Photomontage 8

View Point: View from local road off the R553 in the townland of Farranastack, approximately 8.7 km northeast of the nearest turbine. Designated as Scenic Route 5.

View point grid reference	E 492,953 N 641,450
Date of image taken	05.11.2020
Time of image taken	4:34pm
View point elevation	150m
Angle of Views	90° / 53.5°
View Direction (Image Centre)	200°
Horizontal extent of proposed turbines	9°
Distance to nearest proposed turbine	8.7km (T3)
Number of proposed turbines visible	x/10
Turbine Hub Height	92.5m
Turbine Tip Height	170m
Turbine Rotor Diameter	155m
Camera	Canon EOS 600D with 1.5x sensor
Lens	35mm prime. Equivalent zoom range 52.5mm
Tripod	Manfrotto 190X extended to approx 1.65m.
Map Licence	©Copyright of Ordnance Survey Ireland. All Rights Reserved; License No: AR 0021820



View point relative to 20km radius.



View point relative to wind farm site

90° View Extent

Key Image at 120°



53.5° View Extent

Environmental Impact Assessment

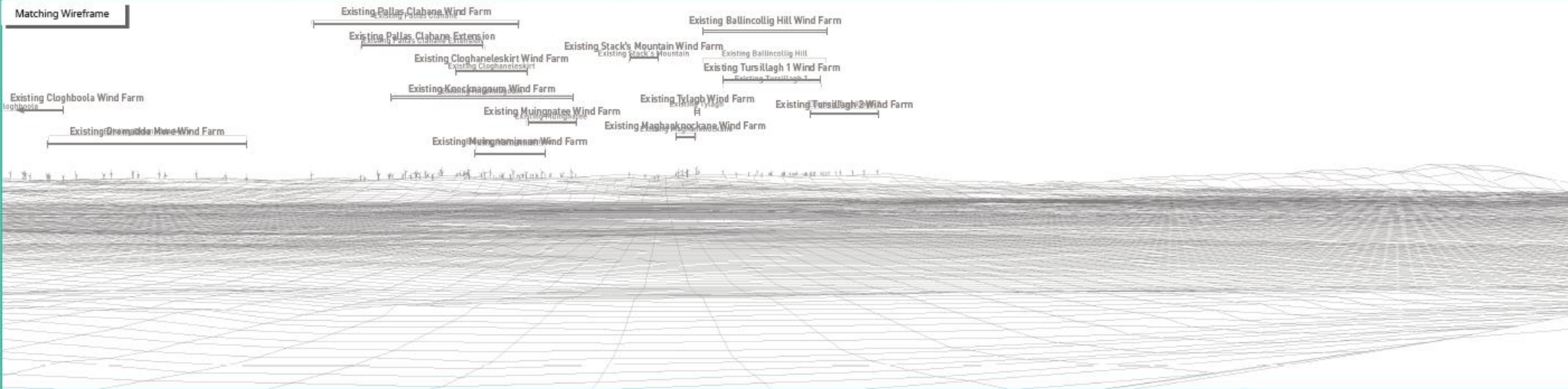
0° Included Angle (Degree)

4°

Baseline at 90°



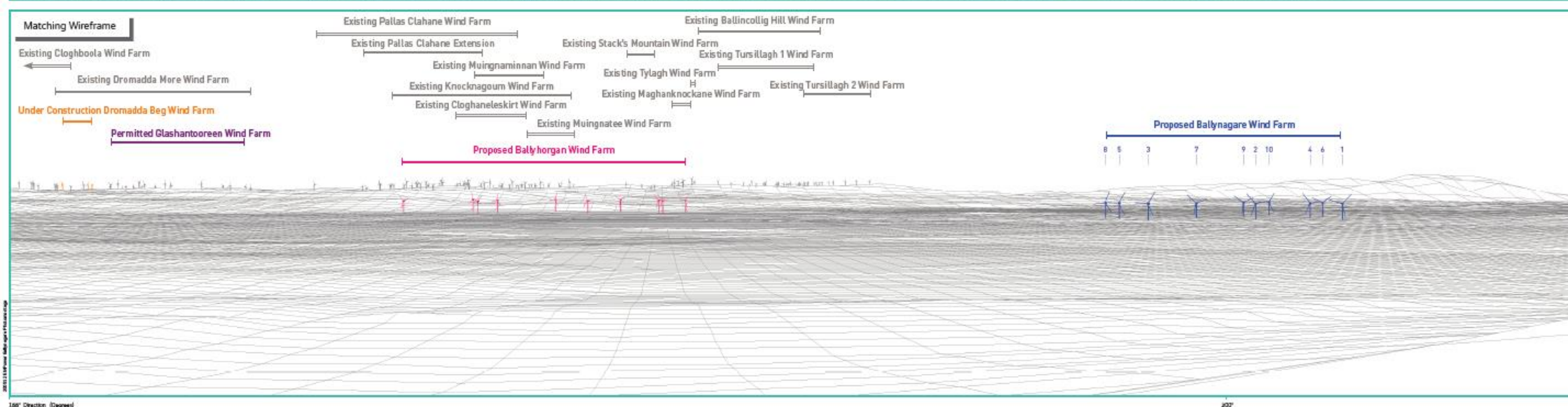
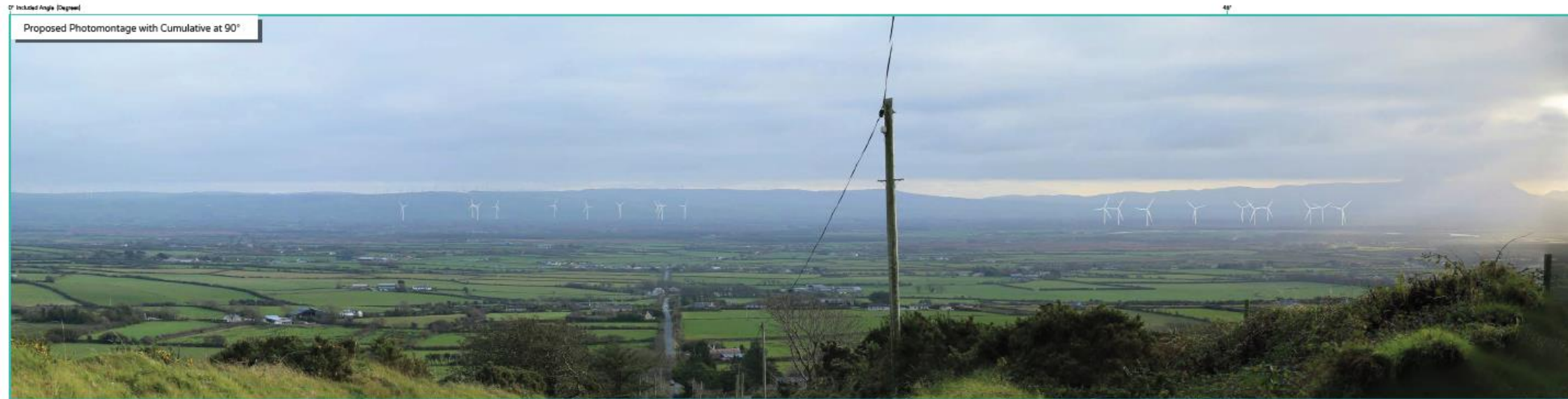
Matching Wireframe



180° Direction (Degree)

200°

Environmental Impact Assessment



Environmental Impact Assessment

View Point 23
Aghabeg East

Photomontage 23

View Point: View from the Ballyduff local road in the townland of Aghabeg East, approximately 2.6 km southwest from the nearest turbine.

View point grid reference	E 486,942 N 629,466
Date of image taken	05.11.2020
Time of image taken	10:55am
View point elevation	10m
Angle of Views	90° / 53.5°
View Direction (Image Centre)	40°
Horizontal extent of proposed turbines	21°
Distance to nearest proposed turbine	2.6km (T10)
Number of proposed turbines visible	x/10
Turbine Hub Height	92.5m
Turbine Tip Height	170m
Turbine Rotor Diameter	155m
Camera	Canon EOS 600D with 1.5x sensor
Lens	35mm prime. Equivalent zoom range 52.5mm
Tripod	Manfrotto 190X extended to approx 1.65m.
Map Licence	©Copyright of Ordnance Survey Ireland. All Rights Reserved; Licence No: AR 0021820



View point relative to 20km radius.



View point relative to wind farm site

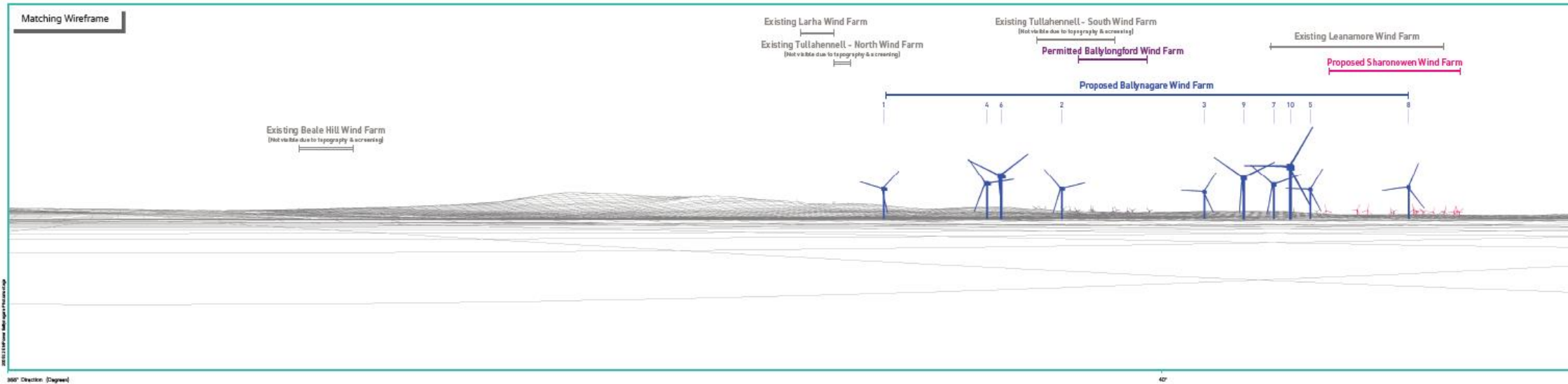
90° View Extent



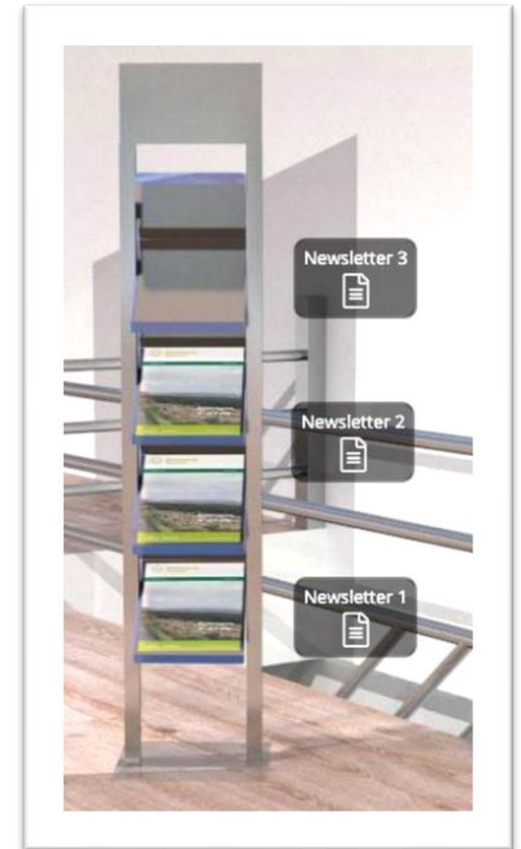
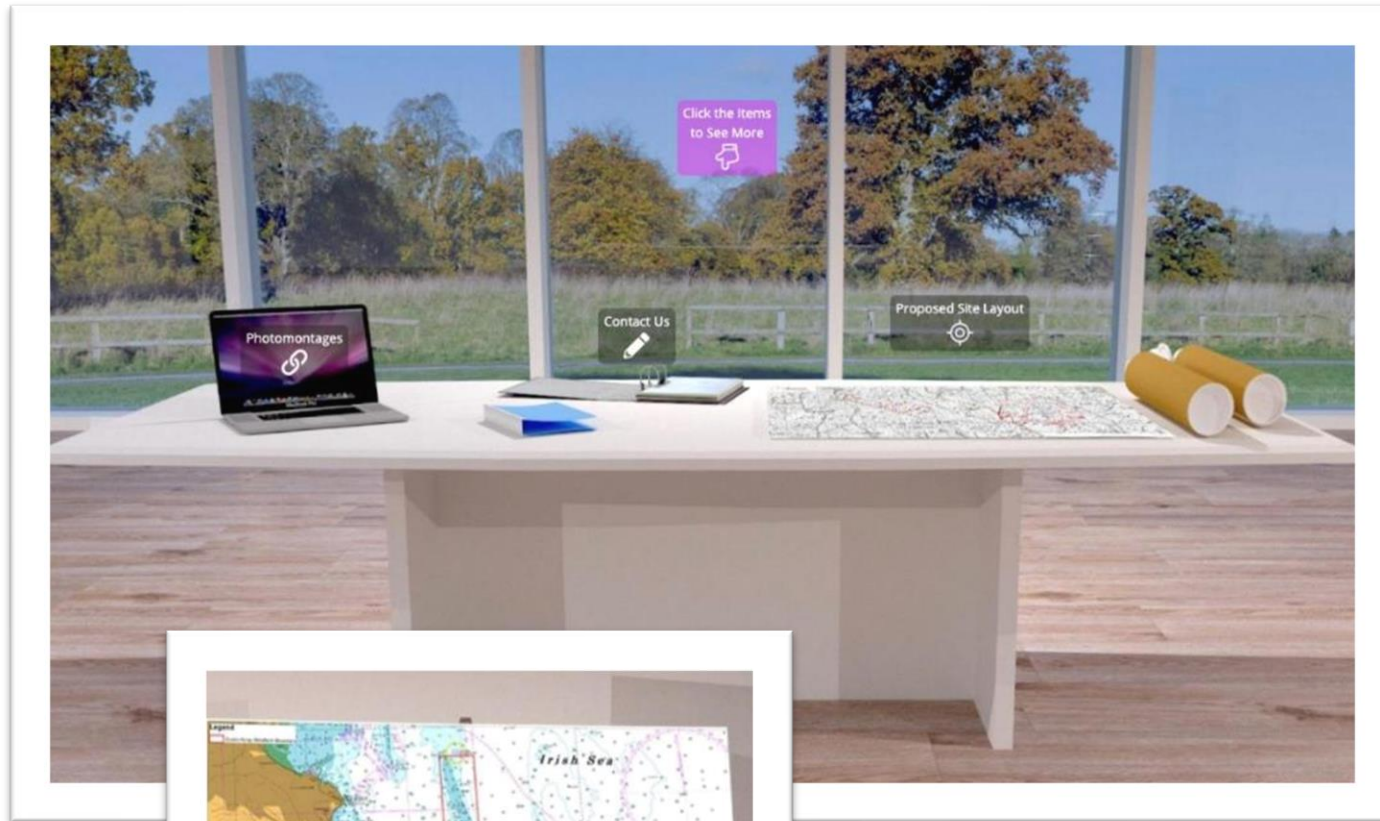
Key Image at 120°

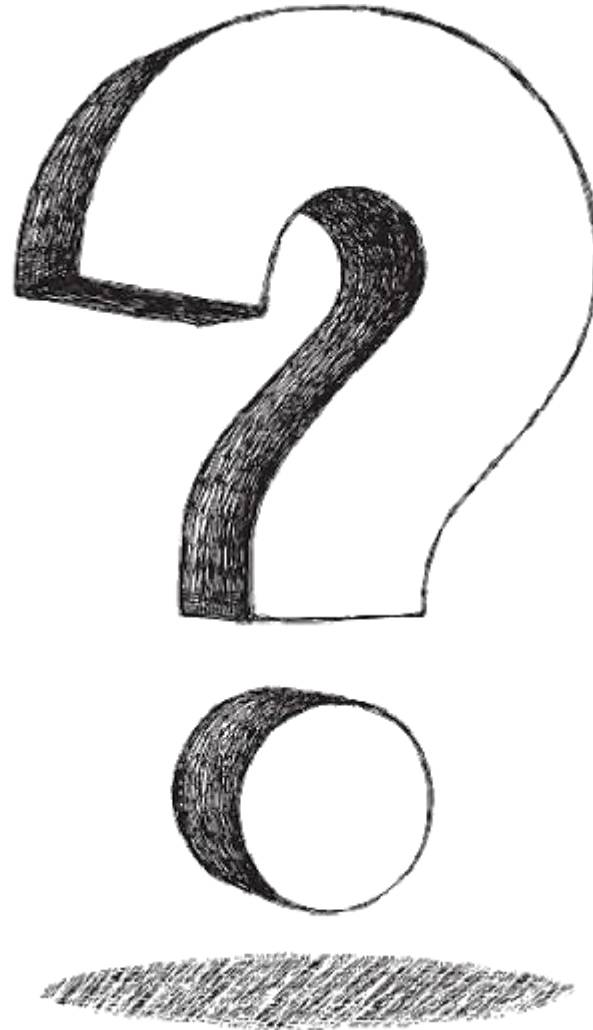
53.5° View Extent

Environmental Impact Assessment



Virtual Consultation Room





- **Proposed Ballynagare Wind Farm**
 - Up to 10 turbines
 - Estimated 60 MW
 - 35,000 Irish homes powered
- **Community Fund**
 - Average €297,000 per year
 - €1,000 per year (households <1km)
 - €500 per year (households >1km <1.5km)
 - Fund focused on Ballyduff and Lixnaw Villages
- **Next Steps**
 - Virtual consultation room
 - Submission for planning in Summer 2021



Get in Touch

A : EMPower, 2 Dublin Landings, North Wall Quay, North Dock, Dublin 1

E : info@emp.group

T : 01 588 0178