

# Proposed Ballynagare Wind Farm

## 3<sup>rd</sup> Public Consultation Webinar – September 2021



We will begin shortly. We are allowing people a few extra minutes to dial in...

# Ballynagare Wind Farm Proposal

- Company Introduction
- Wind Farm Design
- Community Fund
- Q&A
- EIA Activities
- Q&A
- Conclusion



# Company Introduction



## 95 Years

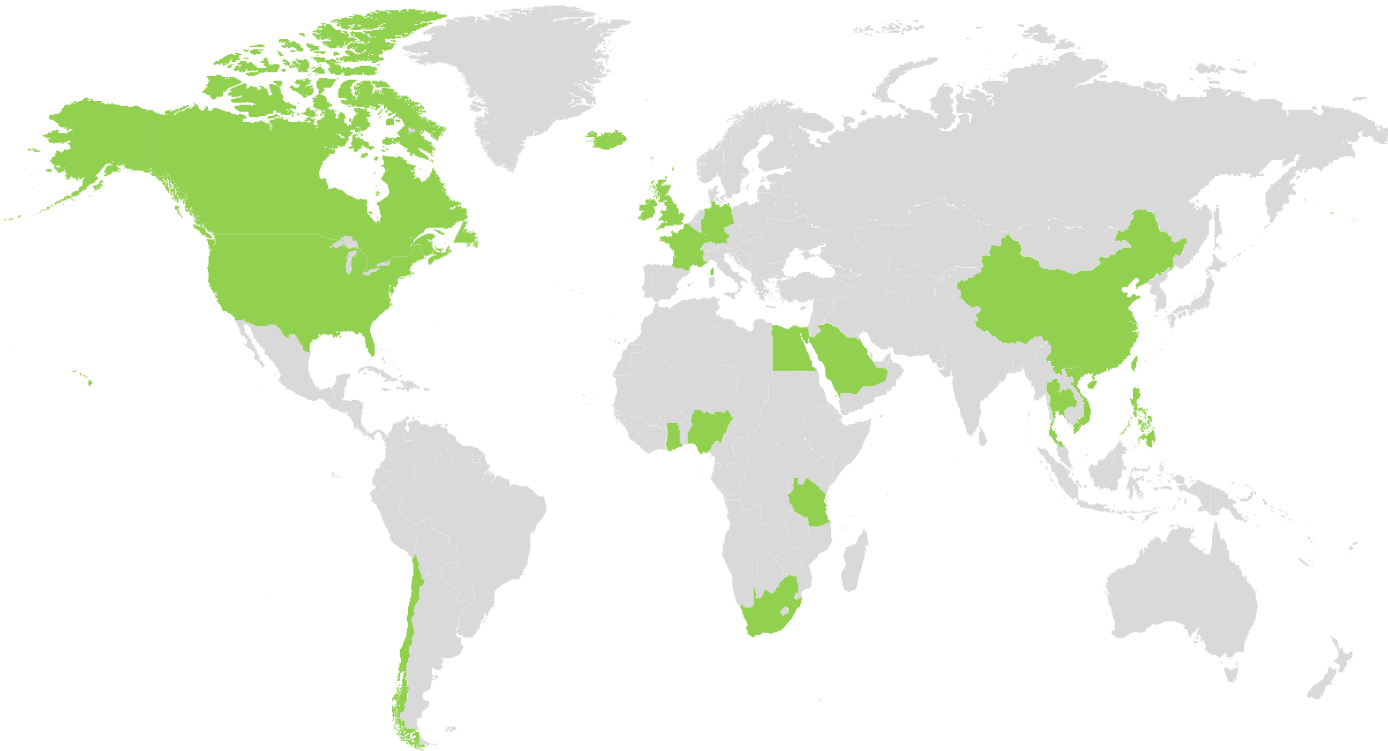
Combined Experience of  
EMPower Management  
Team in Renewable Energy

## +700 MW

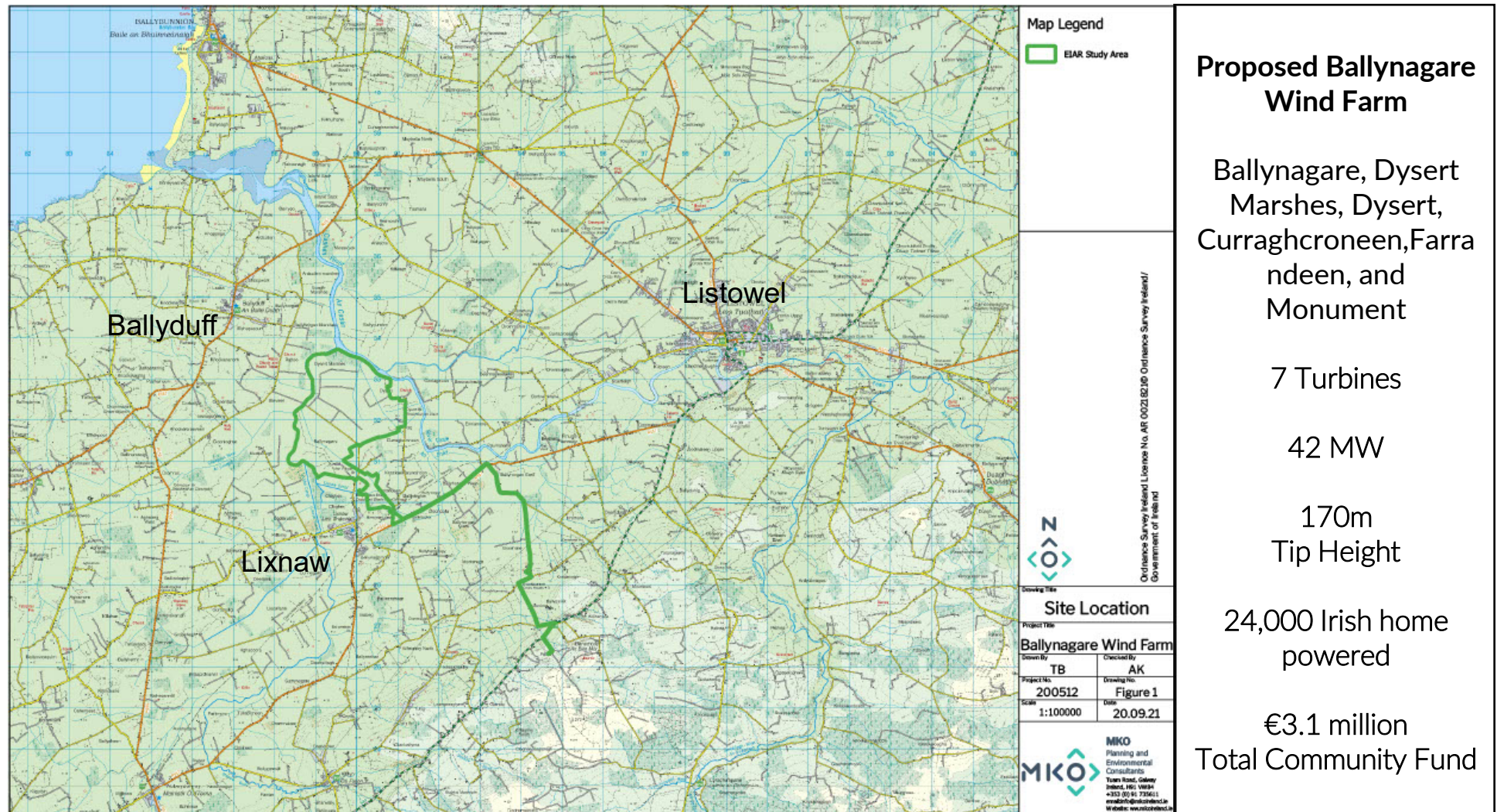
Wind Energy Capacity  
Currently Under  
Development By EMPower

## 5 Continents

Combined Geographical  
Experience of EMPower  
Team in Renewable Energy



# Project Introduction



## Proposed Ballynagare Wind Farm

Ballynagare, Dysert Marshes, Dysert, Curraghcroneen, Farra ndeen, and Monument

7 Turbines

42 MW

170m  
Tip Height

24,000 Irish home powered

€3.1 million  
Total Community Fund

# Proposed Project Schedule

Planning Submission to Kerry County Council October 2021

---

Grid Connection Submission Autumn 2022

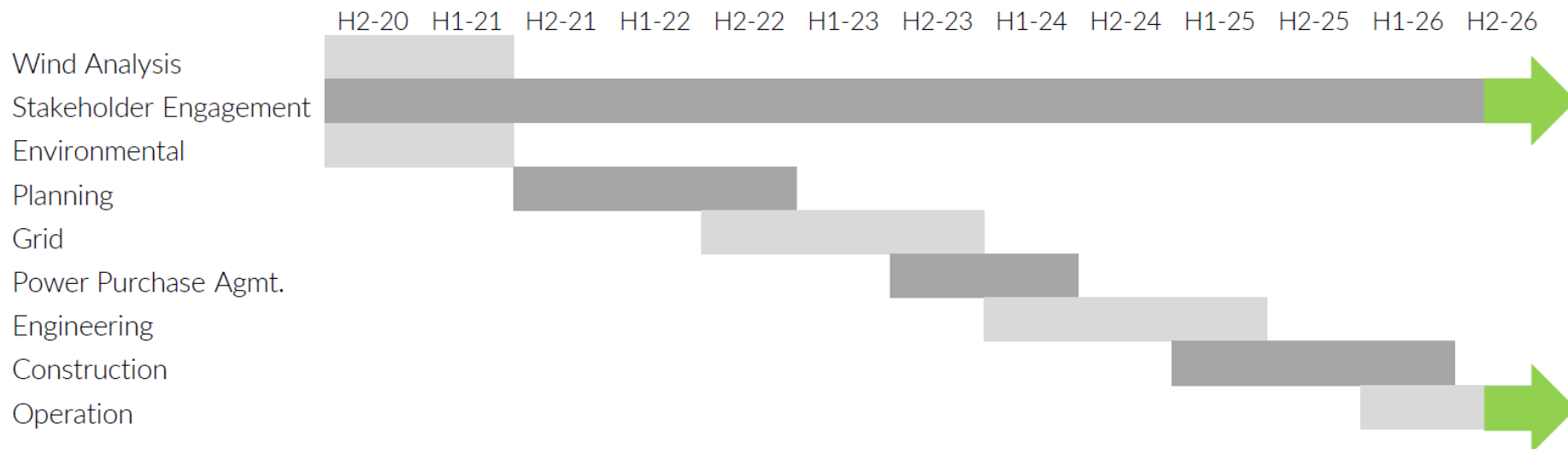
---

Renewable Electricity Support Scheme Submission Summer 2023

---

Construction Commences Spring 2025

---



# Energy Targets in Ireland

Table 7.5 Potential Metrics to Deliver Abatement in Electricity

Key Metrics	2017	2025 Based on MACC	2030 Based on MACC
Share of Renewable Electricity, %	~30% <sup>20</sup>	52%	70%
Onshore Wind Capacity, GW	~3.3	6.5	8.2
Offshore Wind Capacity, GW	NA	1.0	3.5
Solar PV Capacity, GW	NA	0.2	0.4
CCGT Capacity, GW	~3.6	5.1	4.7

**70%**  
Renewables by  
2030

**8.2 GW**  
Onshore wind  
by 2030

Source – Department of Communications, Climate Action and Environment  
Climate Action Plan 2019  
Marginal Abatement Cost Curve (MACC) Analysis

# Site Screening

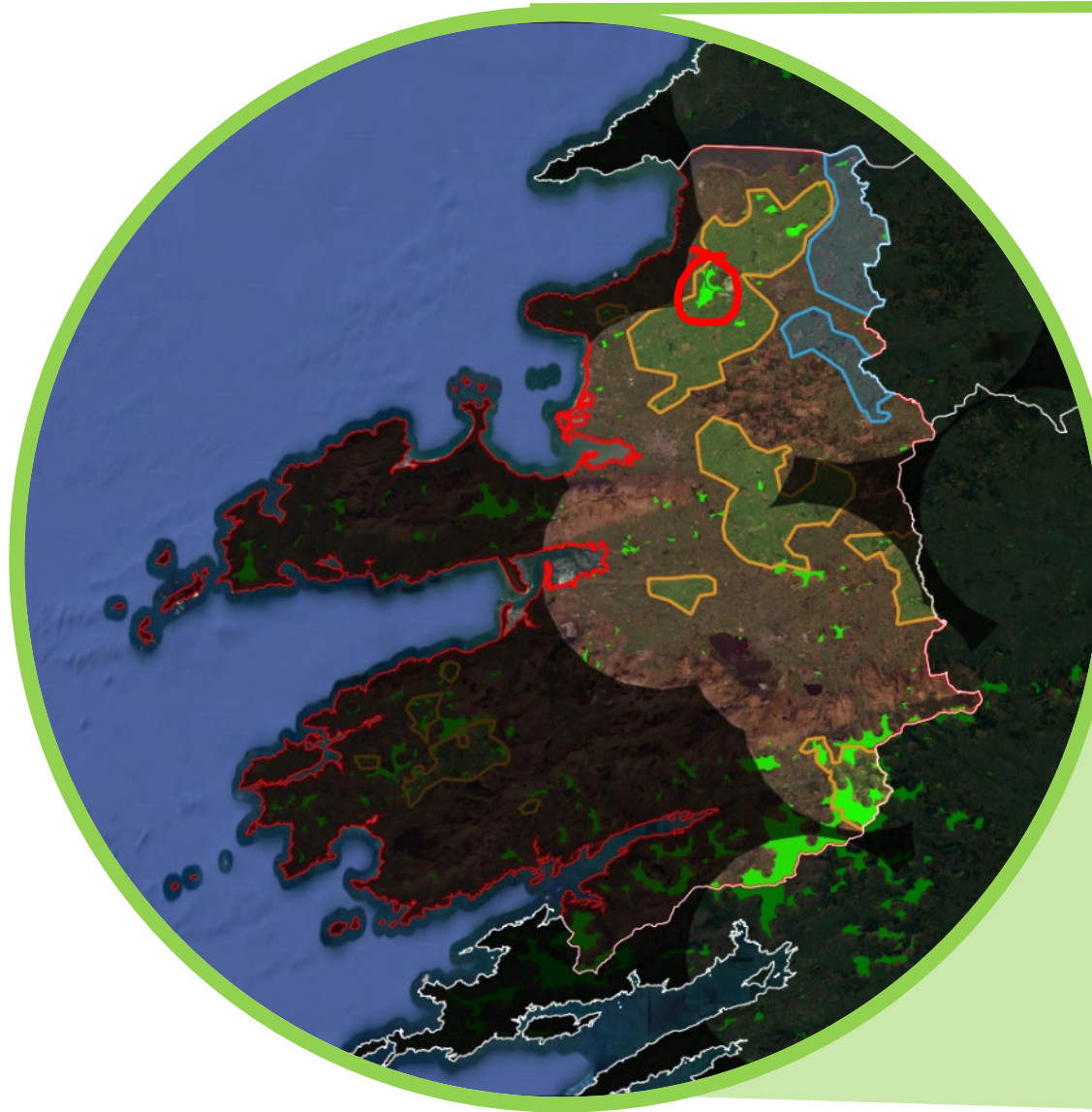


Screening analysis performed on the entire Republic of Ireland incorporating constraints such as:

- Wind speed
- Grid connection
- Environmental Designations
- Culture and heritage
- Tourism
- County Development Plans
- Existing, planned and permitted projects
- Housing

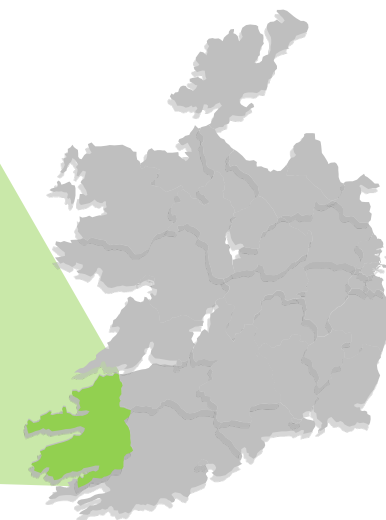


# Site Screening



Legend

- Buildable Area



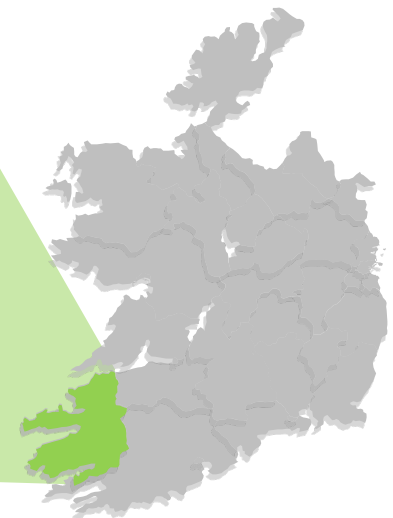


# Site Screening

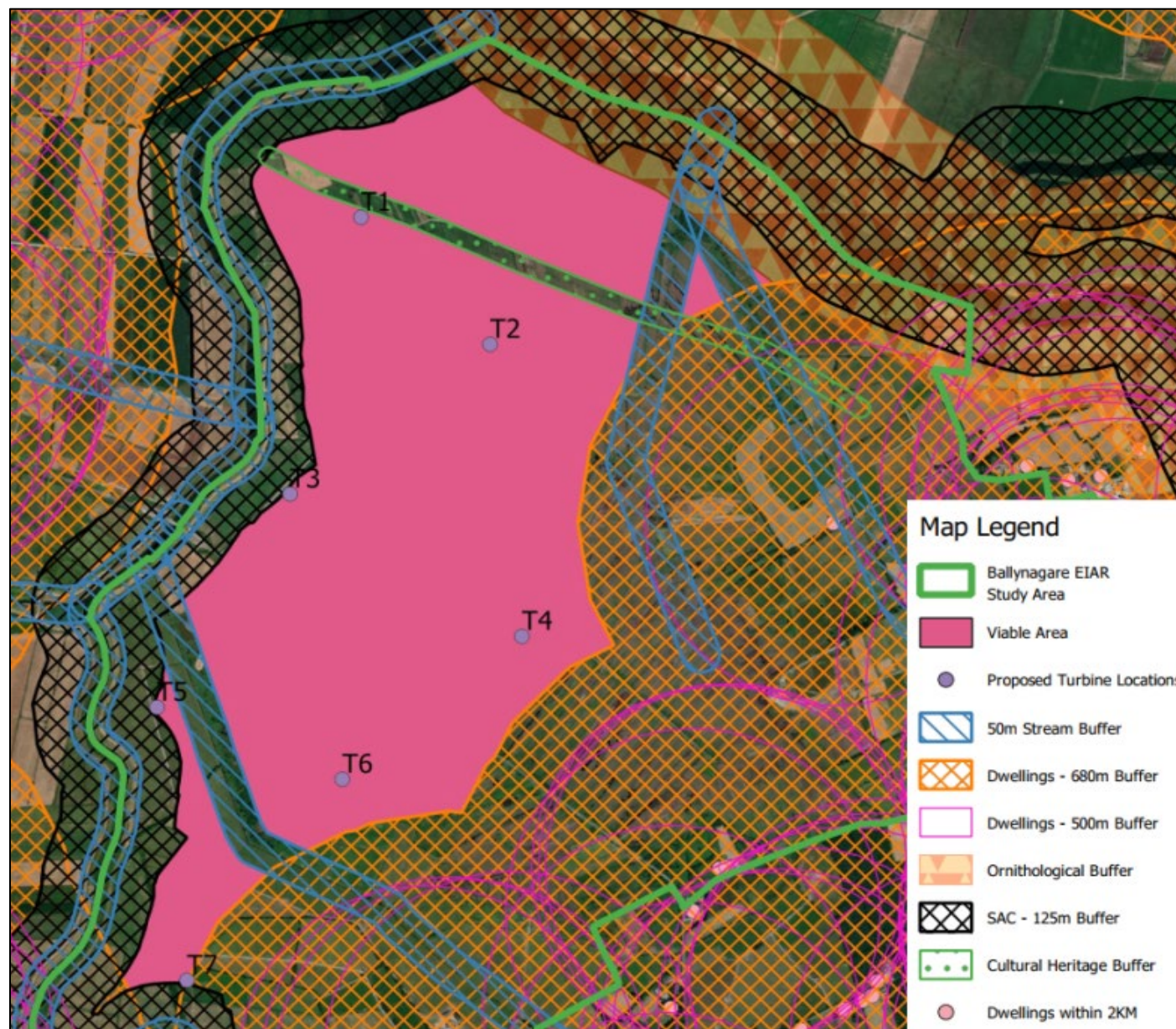


**Legend**

- Buildable Area



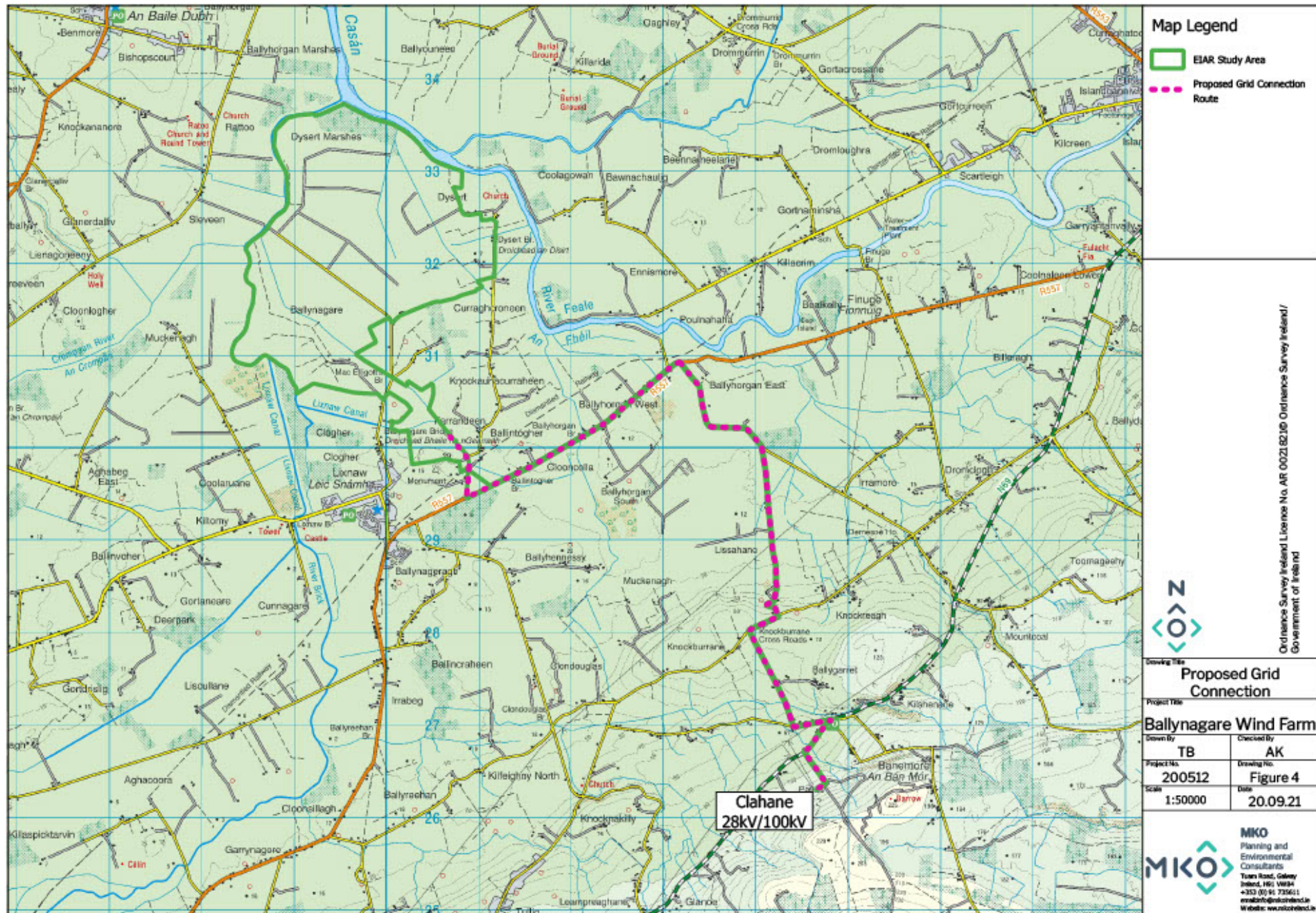
# Detailed Constraints Analysis



# Proposed Ballynagare Layout



# Grid Connection Route



# Haulage Route



NOTES:

PLANNING DRAWING ONLY - NOT FOR CONSTRUCTION PURPOSES

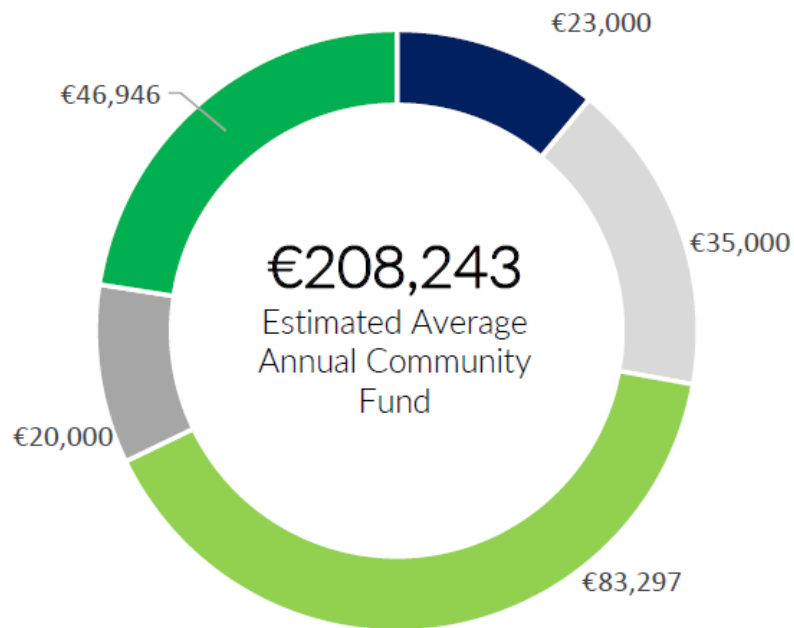
Figure A14.2.1 Haul route, national road network

PROJECT:	Ballynagare Wind Farm	SCALE:	NTS
CLIENT:	Ballynagare Windfarm Ltd	PROJECT NO:	8890
DATE:	16.08.21	DRAWN BY:	AL

**ALAN LIPSCOMBE**  
**TRAFFIC & TRANSPORT CONSULTANTS**

# Community Benefits

Ballynagare Indicative Community Fund Allocation



- Combined Fund for Households <1km distance
- Combined Fund for Households >1km, < 1.5km distance
- Not-for-profit community enterprises
- Fund administration
- Local initiatives, clubs and societies

71

Direct jobs in construction phase

17

Highly skilled jobs over project lifetime

€ 46.2 million

Investment in Irish infrastructure

€ 3.1 million

Total Community Fund Contribution

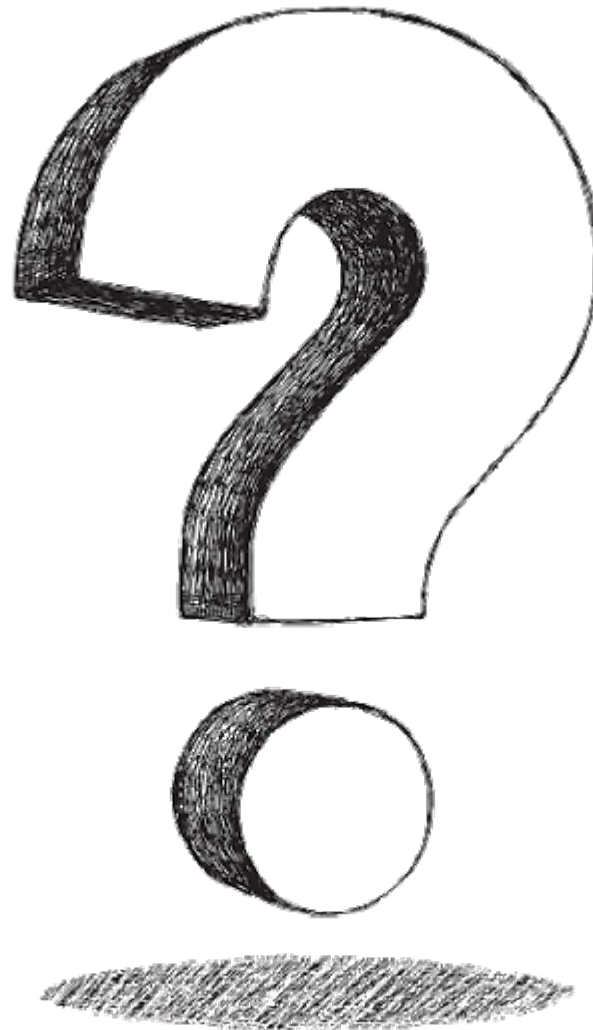
€ 10.1 million<sup>2</sup>

County Council Rates Contribution

Renewable Electricity Support Scheme (RESS)  
High Level Design

# Question Time

---





# MKO Company Introduction





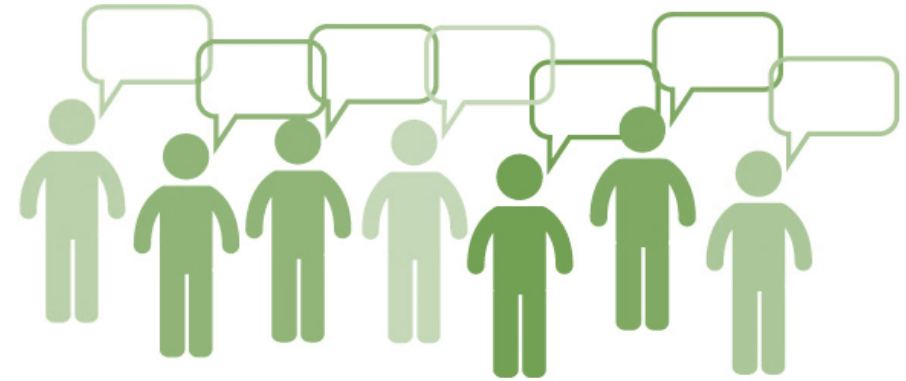
- **Submission to Kerry County Council**
- **Planned Submission Date – October 2021**
- **Planning Description**
  - Construction of up to 7 no. wind turbines with an overall maximum ground to blade tip height of 170m and associated hardstand areas;
  - Provision of 1 no. meteorological mast with a maximum height of up to 110 metres
  - Upgrade of existing roads and access junctions
  - Provision of new site entrances, roads and hardstand areas
  - Peat Storage Areas
  - 2 no. construction compounds
  - 1no. Borrow pit
  - Site drainage
  - 1 no. onsite 38kV electricity sub-station, control building and plant, associated security fencing and wastewater holding tank
  - 38kV Underground Cable from onsite substation to Clahane 38/110 kV grid connection point
  - All associated underground electrical and communication cabling connecting the turbines to the proposed on-site substation
  - All ancillary site and ground works, apparatus and signage
  - The application is seeking a ten-year planning permission and 35 year operational life from the date of commissioning of the wind farm.

## Hydrology



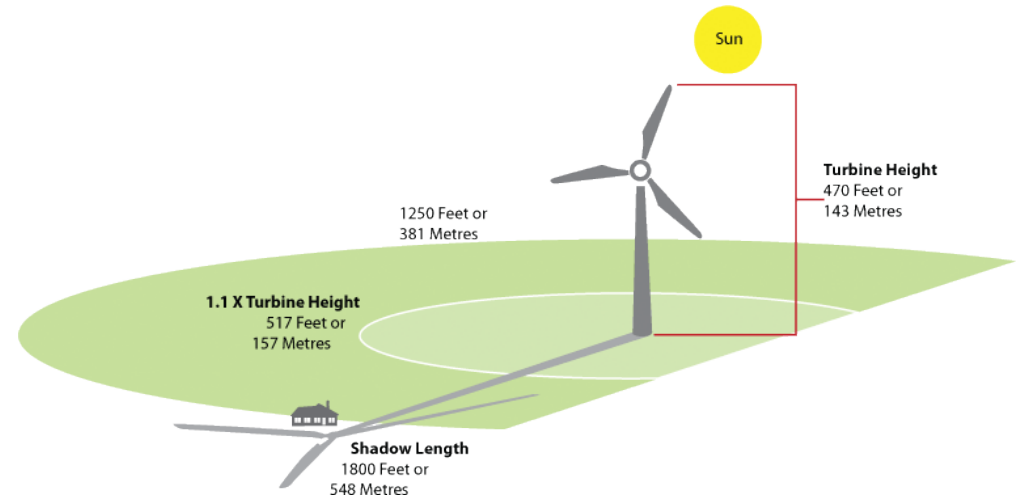
## Ornithology

## Population & Human Health



Biodiversity

## Shadow Flicker



Sound

## Construction and Civil Engineering



Archaeology



## Landscape and Visuals



### Photomontage 1

**View Point:** View from the Rattoo Church and Round Tower in the townland of Cloonagh, approximately 1.3 km northeast from the nearest turbine.

View point grid reference	E 487,776 N 693,611
Capture Date of image taken	05.11.2020
Time of image taken	2:30pm
View point elevation	17m
Angle of Views	90° / 53.5°
View Direction (Image Centre)	128°
Horizontal extent of proposed turbines	59°
Distance to nearest proposed turbine	1.3km (T1)
Number of proposed turbines visible	7/7
Turbine hub height	95m
Turbine Tip Height	170m
Turbine Rotor Diameter	150m
Camera	Canon EOS 600D with 1.5x sensor
Lens	35mm prime. Equivalent zoom range 52.5mm
Tripod	Manfrotto 190X extended to approx 1.05m.
Map Licence	©Copyright of Ordnance Survey Ireland. All Rights Reserved; License No: AR-0021820



View point relative to 20km radius.



View point relative to wind farm site



Detail of view point location.

**Map Legend**

- Area shown in 90° view
- Area shown in 53.5° view
- View Point
- Proposed Ballynagare Wind Farm

**Wireframe Legend**

- Proposed Ballynagare Wind Farm in Blue
- Permitted Wind Farms in Purple
- Existing Wind Farms in Grey
- Under Construction Wind Farms in Orange
- Other Proposed Wind Farms in Pink

**Prepared by**  
MKO  
Planning & Environmental Consultants  
Tuam Road, Galway.  
Tel: (091) 73 96 11  
Email: info@mkoheland.ie  
Website: www.mkoheland.ie

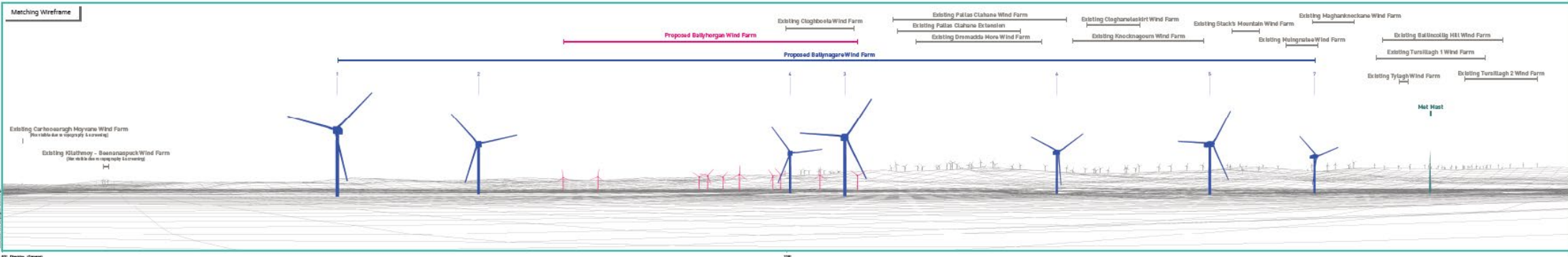
Key Image at 120°



90° View Extent

53.5° View Extent

Proposed Photomontage with Cumulative at 90°





**View Point 3**

**Derryco**

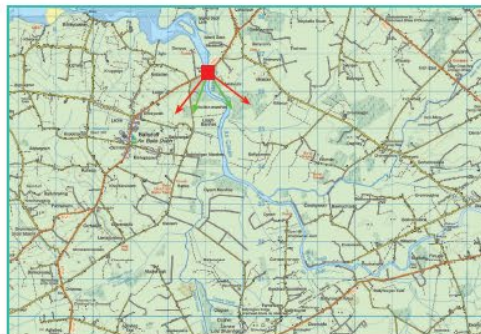
**Photomontage 3**

**View Point:** View from R551 and Wild Atlantic Way in the townland of Derryco, approximately 3.2 km north of the nearest turbine. Designated as Scenic Route 1 (Ferry Bridge).

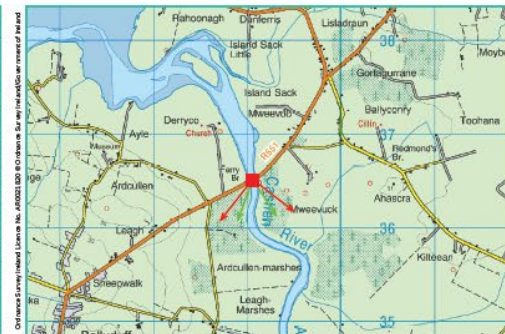
View point grid reference	E 489,030 N 030,500
Capture Date of image taken	05.11.2020
Time of image taken	3:11pm
View point elevation	8m
Angle of Views	90° / 53.5°
View Direction (Image Centre)	173°
Horizontal extent of proposed turbines	25°
Distance to nearest proposed turbine	3.2km (T1)
Number of proposed turbines visible	7/7
Turbine Hub Height	95m
Turbine Tip Height	170m
Turbine Rotor Diameter	150m
Camera	Canon EOS 800D with 1.5x sensor
Lens	35mm prime. Equivalent zoom range 52.5mm
Tripod	Manfrotto 180X extended to approx 1.65m
Map Licence	©Copyright of Ordnance Survey Ireland. All Rights Reserved. Licence No: AP 0021820



View point relative to 20km radius.



View point relative to wind farm site



Detail of view point location.

**Map Legend**

- Area shown in 90° view
- Area shown in 53.5° view
- View Point
- Proposed Ballynagare Wind Farm

**Wireframe Legend**

- Proposed Ballynagare Wind Farm in Blue
- Permitted Wind Farms in Purple
- Existing Wind Farms in Grey
- Under Construction Wind Farms in Orange
- Other Proposed Wind Farms in Pink

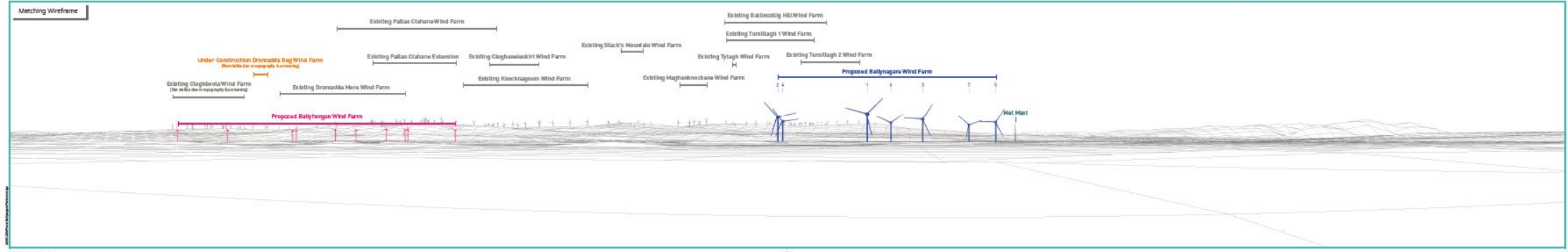
**Prepared by**  
 MKO  
 Planning & Environmental Consultants  
 Tuam Road, Galway.  
 Tel: 091 73 56 11  
 E-mail: info@mkoland.ie  
 Website: www.mkoland.ie



90° View Extent



53.5° View Extent





**Photomontage 9**

**View Point:** View from local road off the R557 in the townland of Dysert, approximately 1.3 km east from the nearest turbine.

View point grid reference	E 491.284 N 632.737
Capture Date of image taken	05.11.2020
Time of image taken	11.45am
View point elevation	8m
Angle of Views	90° / 53.3°
View Direction (Image Centre)	264°
Horizontal extent of proposed turbines	42°
Distance to nearest proposed turbine	1.3km (T2)
Number of proposed turbines visible	4/7
Turbine Hub Height	95m
Turbine Tip Height	170m
Turbine Rotor Diameter	150m
Camera	Canon EOS 600D with 1.5x sensor
Lens	35mm prime. Equivalent zoom range 52.5mm
Tripod	Manfrotto 180X extended to approx 1.05m.
Map Licence	©Copyrights of Ordnance Survey Ireland. All Rights Reserved. License No: AR10221820



View point relative to 20km radius.



View point relative to wind farm site



Detail of view point location.

**Map Legend**

- Area shown in 90° view
- Area shown in 53.3° view
- View Point
- Proposed Ballynagare Wind Farm

**Wireframe Legend**

- Proposed Ballynagare Wind Farm in Blue
- Permitted Wind Farms in Purple
- Existing Wind Farms in Grey
- Under Construction Wind Farms in Orange
- Other Proposed Wind Farms in Pink

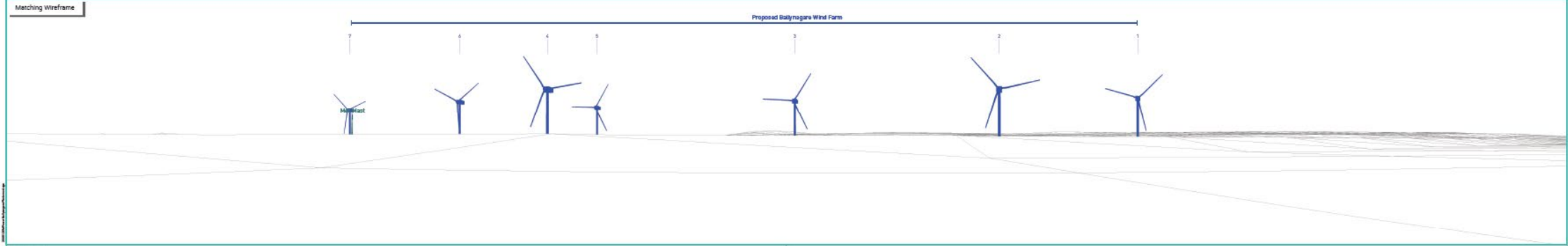
**Prepared by**  
 MKO  
 Planning & Environmental Consultants  
 Tuam Road, Galway.  
 Tel: (091) 79 96 11  
 E-mail: info@mkoland.ie  
 Website: www.mkoland.ie



53.5° View Extent



Proposed Photomontage with Cumulative at 90°



Matching Wireframe

Proposed Ballynagare Wind Farm

**Photomontage 11**

**View Point:** View from local road just off the R555 in the townland of Rathea, approximately 12.5 km west of the nearest turbine. Designated as Scenic Route 3.

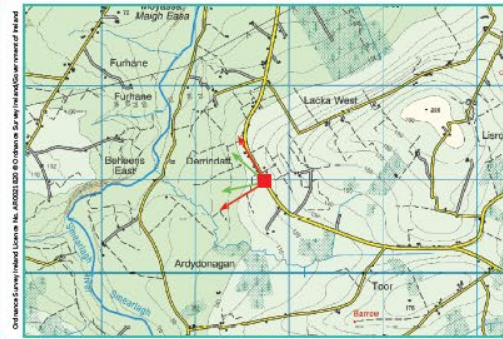
View point grid reference	E 201,731 N 428,013
Capture Date of image taken	06.11.2020
Time of image taken	10:34am
View point elevation	113m
Angle of Views	90° / 53.5°
View Direction (Image Centre)	284°
Horizontal extent of proposed turbines	10°
Distance to nearest proposed turbine	12.5km (T4)
Number of proposed turbines visible	7/7
Turbine Hub Height	95m
Turbine Tip Height	170m
Turbine Rotor Diameter	150m
Camera	Canon EOS 600D with 1.5x sensor
Lens	35mm prime. Equivalent zoom range 52.5mm
Tripod	Manfrotto 190X extended to approx 1.65m.
Map Licence	©Copyright of Ordnance Survey Ireland. All Rights Reserved. Licence No: AR0021820



View point relative to 20km radius.



View point relative to wind farm site



Detail of view point location.

**Map Legend**

- Area shown in 90° view
- Area shown in 53.5° view
- View Point
- Proposed Ballynagare Wind Farm

**Wireframe Legend**

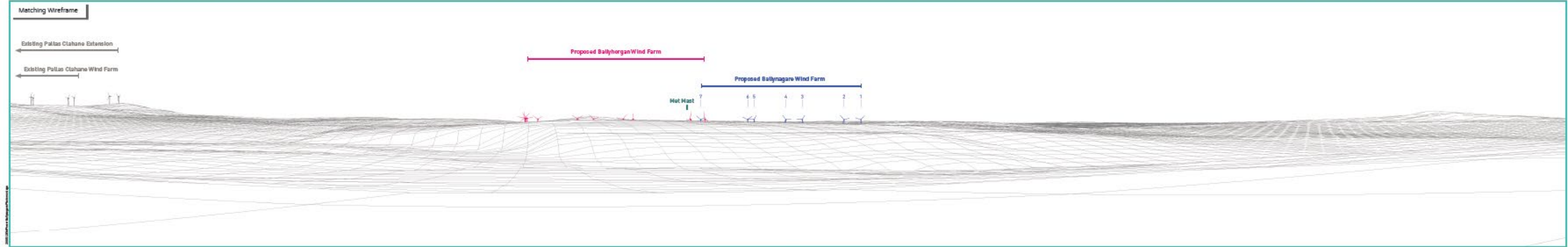
- Proposed Ballynagare Wind Farm in Blue
- Permitted Wind Farms in Purple
- Existing Wind Farms in Grey
- Under Construction Wind Farms in Orange
- Other Proposed Wind Farms in Pink

**Prepared by**

MKO  
 Planning & Environmental Consultants  
 Town Road, Galway  
 Tel: (091) 73 96 11  
 E-mail: info@mkoland.ie  
 Website: www.mkoland.ie



53.5° View Extent



### Photomontage 14

**View Point:** View from the Ballyduff local road in the townland of Aghabeg East, approximately 2.6 km southwest from the nearest turbine.

View point grid reference	E 485,942 N 029,405
Capture Date of image taken	05.11.2020
Time of image taken	10:55am
View point elevation	10m
Angle of Views	90° / 53.5°
View Direction (Image Centre)	40°
Horizontal extent of proposed turbines	21°
Distance to nearest proposed turbine	2.6km (1.7)
Number of proposed turbines visible	7/7
Turbine Hub Height	95m
Turbine Tip Height	170m
Turbine Rotor Diameter	150m
Camera	Canon EOS 600D with 1.5x sensor
Lens	35mm prime. Equivalent zoom range 52.5mm
Tripod	Manfrotto 190X extended to approx 1.65m.
Map Licence	©Copyright of Ordnance Survey Ireland. All Rights Reserved. Licence No: AP0021820



View point relative to 20km radius.



View point relative to wind farm site



Detail of view point location.

#### Map Legend

- Area shown in 90° view
- Area shown in 53.5° view
- View Point
- Proposed Ballynagare Wind Farm

#### Wireframe Legend

- Proposed Ballynagare Wind Farm in Blue
- Permitted Wind Farms in Purple
- Existing Wind Farms in Grey
- Under Construction Wind Farms in Orange
- Other Proposed Wind Farms in Pink

#### Prepared by

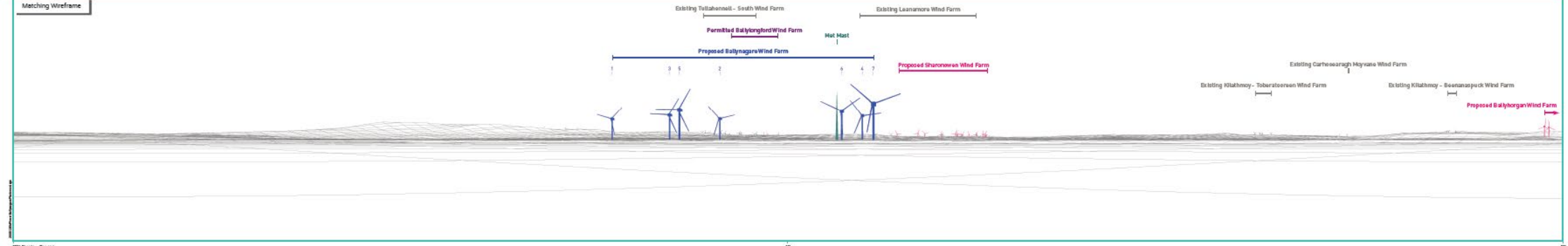
MKD Planning & Environmental Consultants  
Tussock Road, Galway.  
Tel: (091) 73 96 11  
E-mail: info@mkd.ie  
Website: www.mkd.ie



90° View Extent



53.5° View Extent



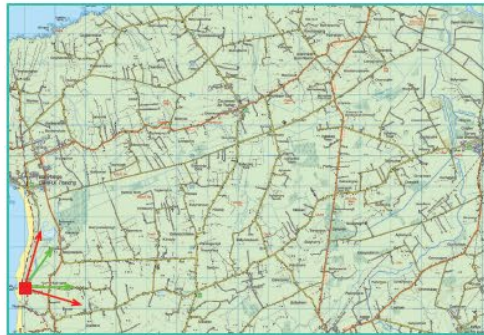
Photomontage 15

**View Point:** View from Banna Strand in the townland of Ballinprior, which is also located in an area of Secondary Special Amenity and along the North Kerry Way, approximately 15.3 km northwest from the nearest turbine.

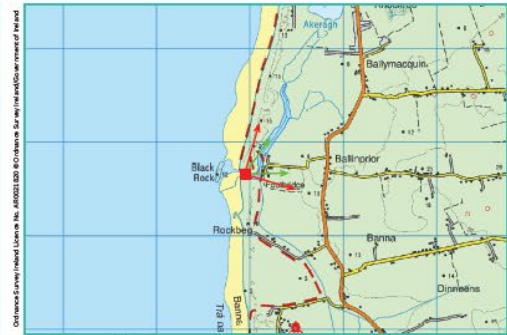
View point grid reference	E 474,982 N 624,700
Capture Date of image taken	05.11.2020
Time of image taken	11:37am
View point elevation	10m
Angle of Views	90° / 53.5°
View Direction (Image Centre)	81°
Horizontal extent of proposed turbines	6°
Distance to nearest proposed turbine	15.3km (710)
Number of proposed turbines visible	7/7
Turbine Hub Height	95m
Turbine Tip Height	170m
Turbine Rotor Diameter	150m
Camera	Canon EOS 600D with 1.3x sensor
Lens	35mm prime. Equivalent zoom range 52.5mm
Tripod	Manfrotto 190X extended to approx 1.65m.
Map Licence	© Copyright of Ordnance Survey Ireland. All Rights Reserved, Licence No. AR 0021820



View point relative to 20km radius.



View point relative to wind farm site  
90° View Extent



Detail of view point location.

Map Legend

- Area shown in 90° view
- Area shown in 53.5° view
- View Point
- Proposed Ballynagare Wind Farm

Wireframe Legend

- Proposed Ballynagare Wind Farm in Blue
- Permitted Wind Farms in Purple
- Existing Wind Farms in Grey
- Under Construction Wind Farms in Orange
- Other Proposed Wind Farms in Pink

Prepared by

MKC Planning & Environmental Consultants  
 Tuam Road, Galway.  
 Tel: (091) 73 96 11  
 Email: info@mkc.ie  
 Website: www.mkc.ie



Key Image at 120°



53.5° View Extent

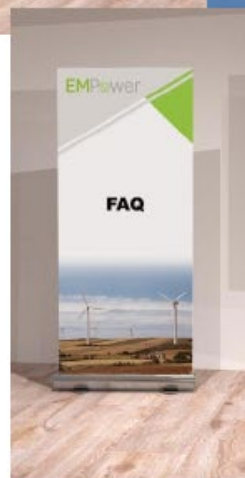
Proposed Photomontage with Cumulative at 90°

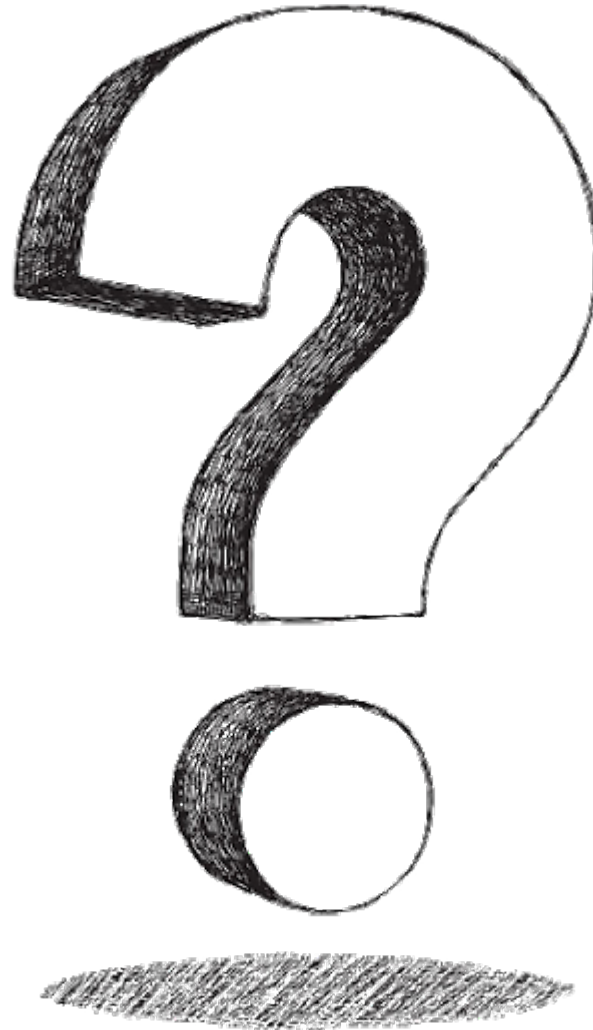


Matching Wireframe



# Virtual Consultation Room





- **Proposed Ballynagare Wind Farm**
  - 7 turbines
  - Estimated 42 MW
  - 24,700 Irish homes powered
- **Community Fund**
  - Average €208,243 per year
  - €1,000 per year (households <1km)
  - €500 per year (households >1km <1.5km)
  - Fund focused on Ballyduff and Lixnaw Villages
- **Next Steps**
  - Virtual consultation room
  - Submission for planning in October 2021



## Get in Touch

A : EMPower, 2 Dublin Landings, North Wall Quay, North Dock, Dublin 1

E : [ballynagare@emp.group](mailto:ballynagare@emp.group)

T : 01 588 0178